

# Pinyon Jay Update

Scott  
Somershoe  
U.S. Fish and  
Wildlife Service



# Pinyon Jay Working Group

100+ partners,  
Steering  
Committee, co-  
chairs, state  
working groups

- Conservation strategy
- Landscape Applications survey protocols
- Project level protocols
- Predictive Occurrence Model

## Conservation Strategy for the Pinyon Jay (*Gymnorhinus cyanocephalus*)



Photo by Scott Somershoe

Version 1, February 2020



# Pinyon Jays use a wide variety of woodland habitats

**Pine Nut Mtns, western Nevada**



Shrub dependent





# Pinyon Jays use a wide variety of woodland habitats

## Pine Nut Mtns, western Nevada





# Pinyon Jays use a wide variety of woodland habitats

**Montana**



Photo: Jeff Marks

**Southwest Colorado**



**Grand Canyon**





# Pinyon Jays use a wide variety of woodland habitats

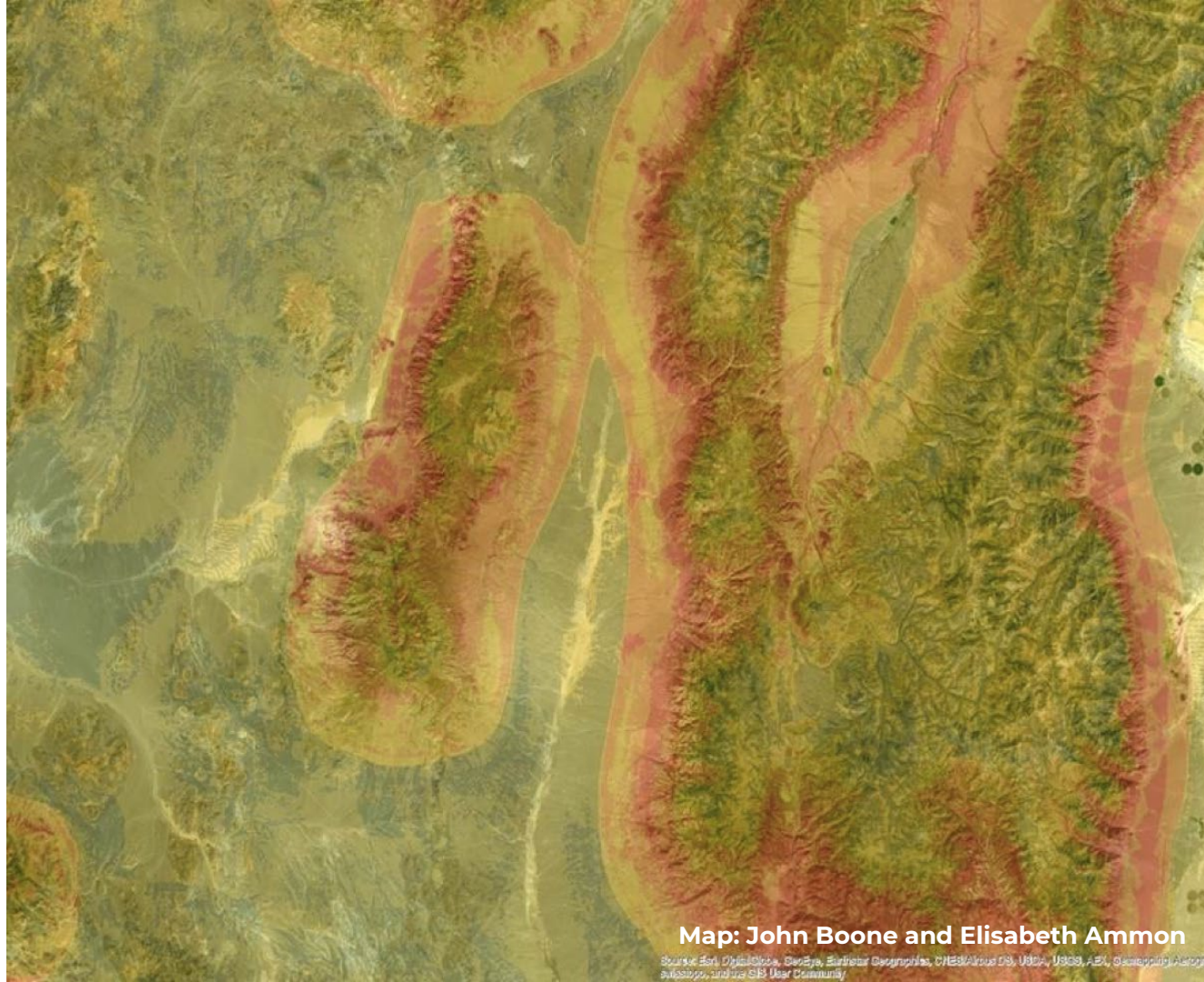
## Central Colorado





# Great Basin

Relative  
abundance  
greatest in the  
ecotone



**Map: John Boone and Elisabeth Ammon**

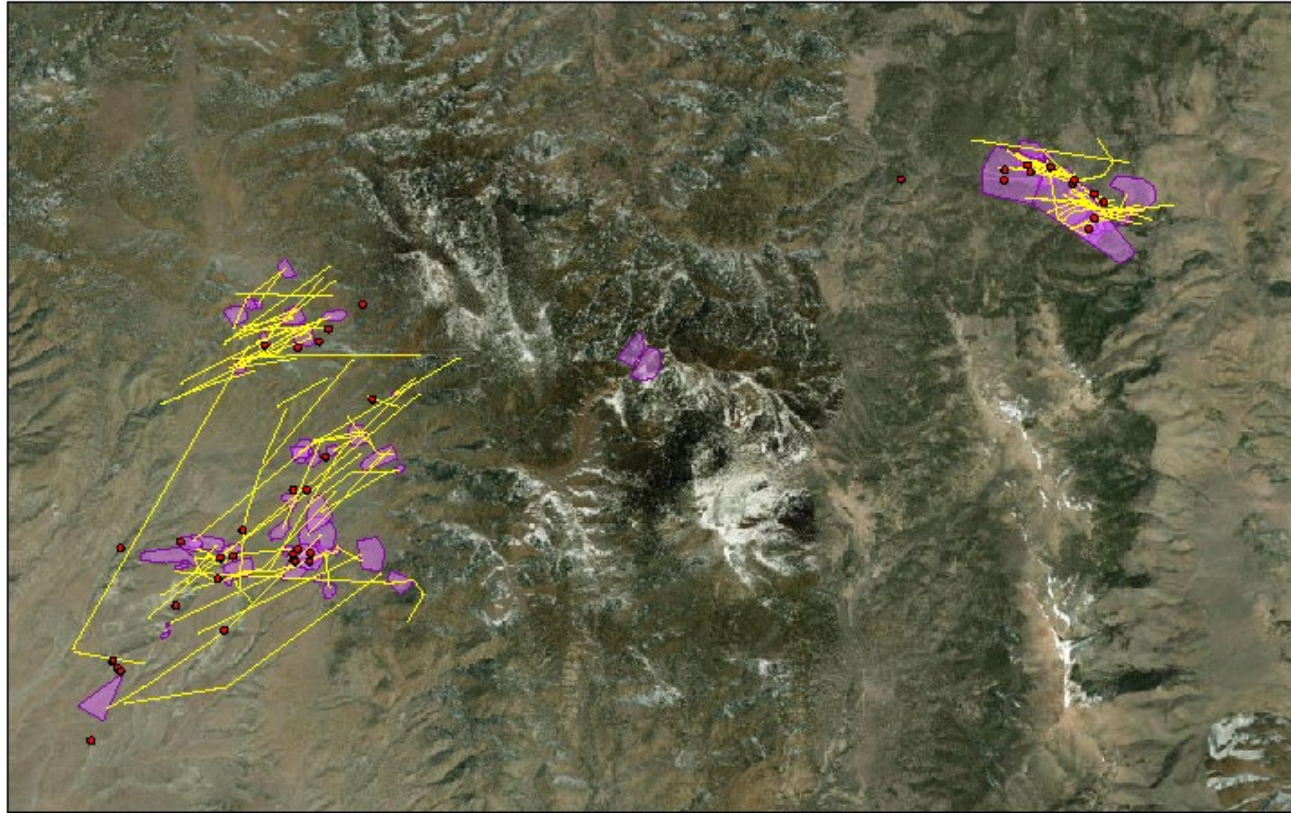
Source: Esri, DigitalGlobe, GeoEye, Earthstar Geographics, CNES/Airbus DS, USDA, USGS, Aero, Swire, and the GIS User Community

Great Basin  
Bird  
Observatory  
Pinyon Jay  
research in  
the Bi-state

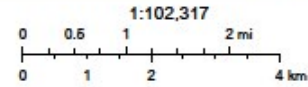
Northern  
Pine Nuts



PIJA\_PineNuts\_StoryMap



10/9/2023



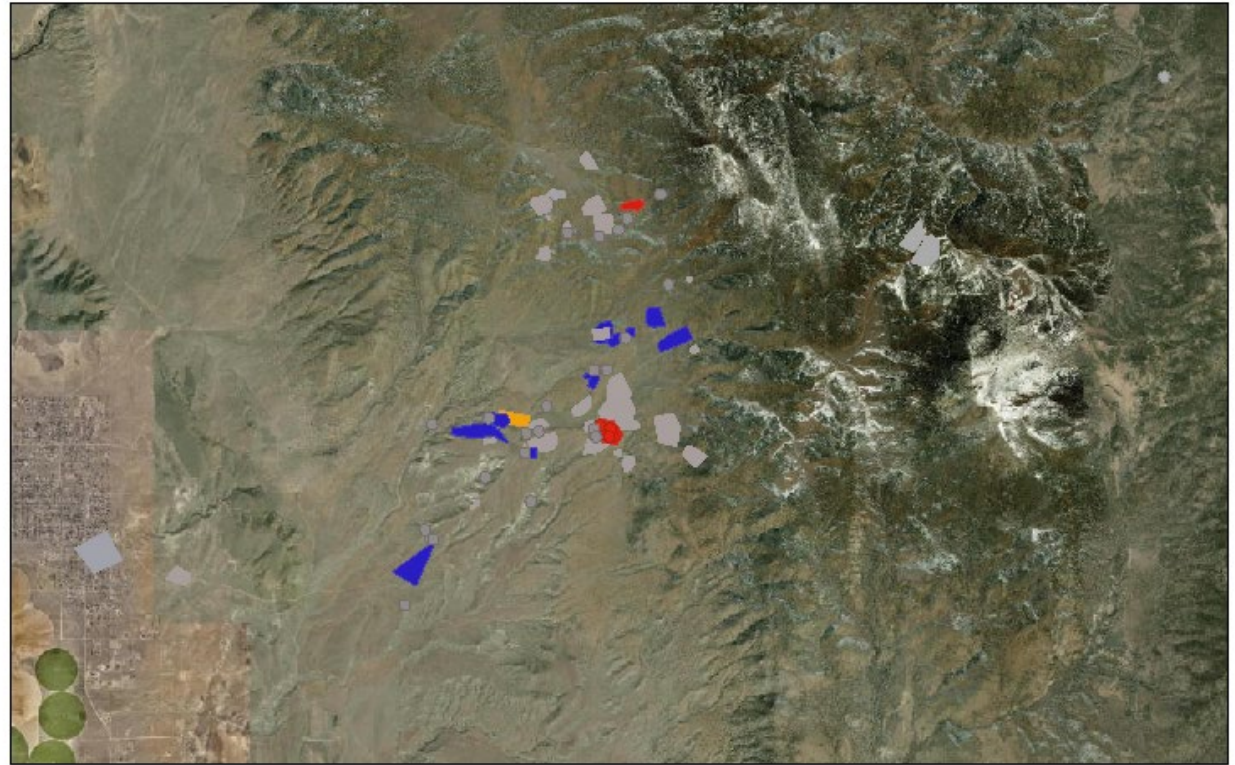
Map courtesy of John Boone, GBBO



Great Basin  
Bird  
Observatory  
Pinyon Jay  
research in  
the Bi-state

Pine Nuts  
habitat use

PIJA\_PineNuts\_StoryMap



10/9/2023



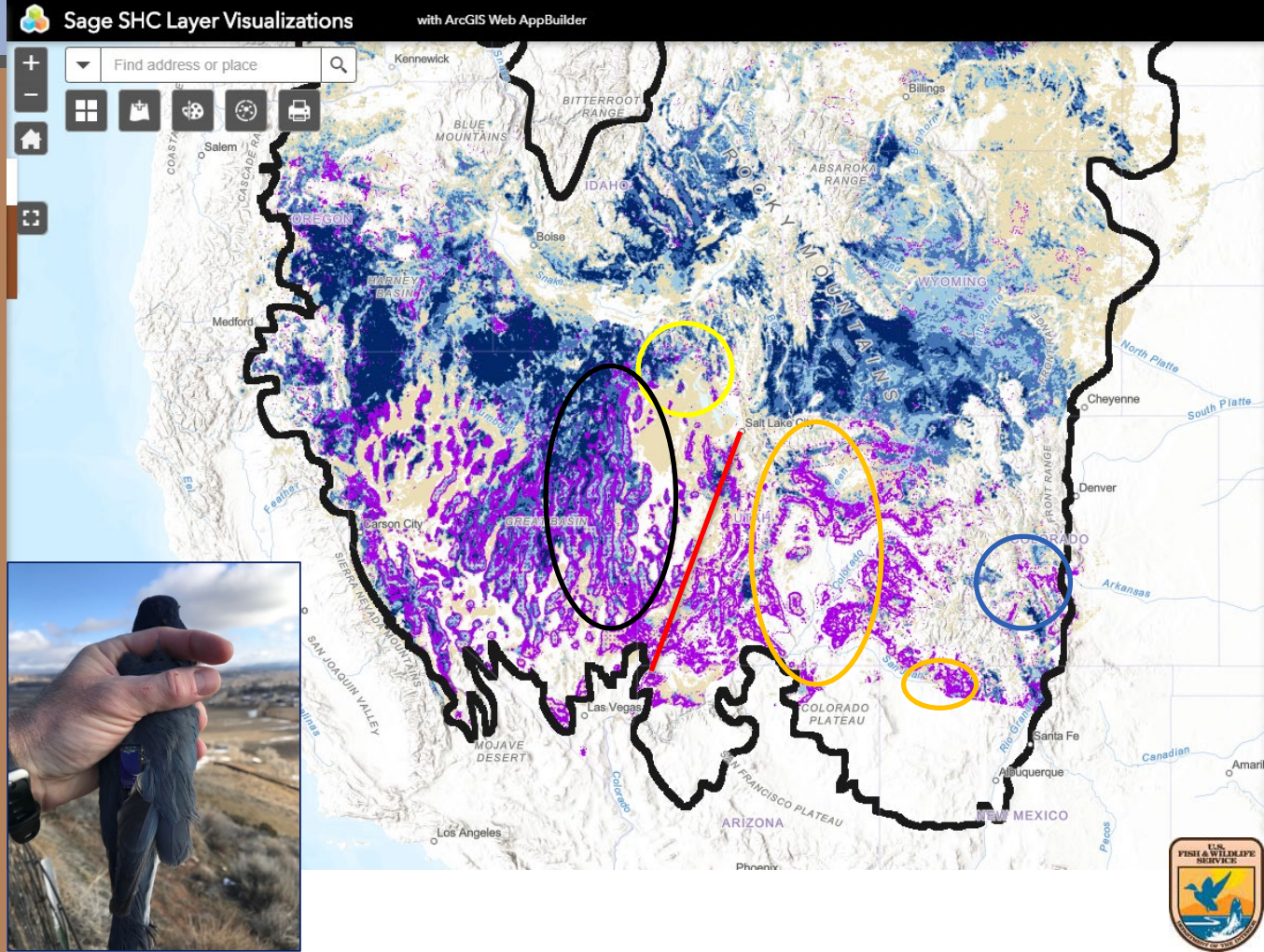
Map courtesy of John Boone, GBBO

# Sagebrush and P-J ecotone management





Research addressing key knowledge gaps is ongoing in the Great Basin and Colorado Plateau



Thanks!

[Scott\\_Somershoe@fws.gov](mailto:Scott_Somershoe@fws.gov)

Google “Pinyon Jay Working Group”

