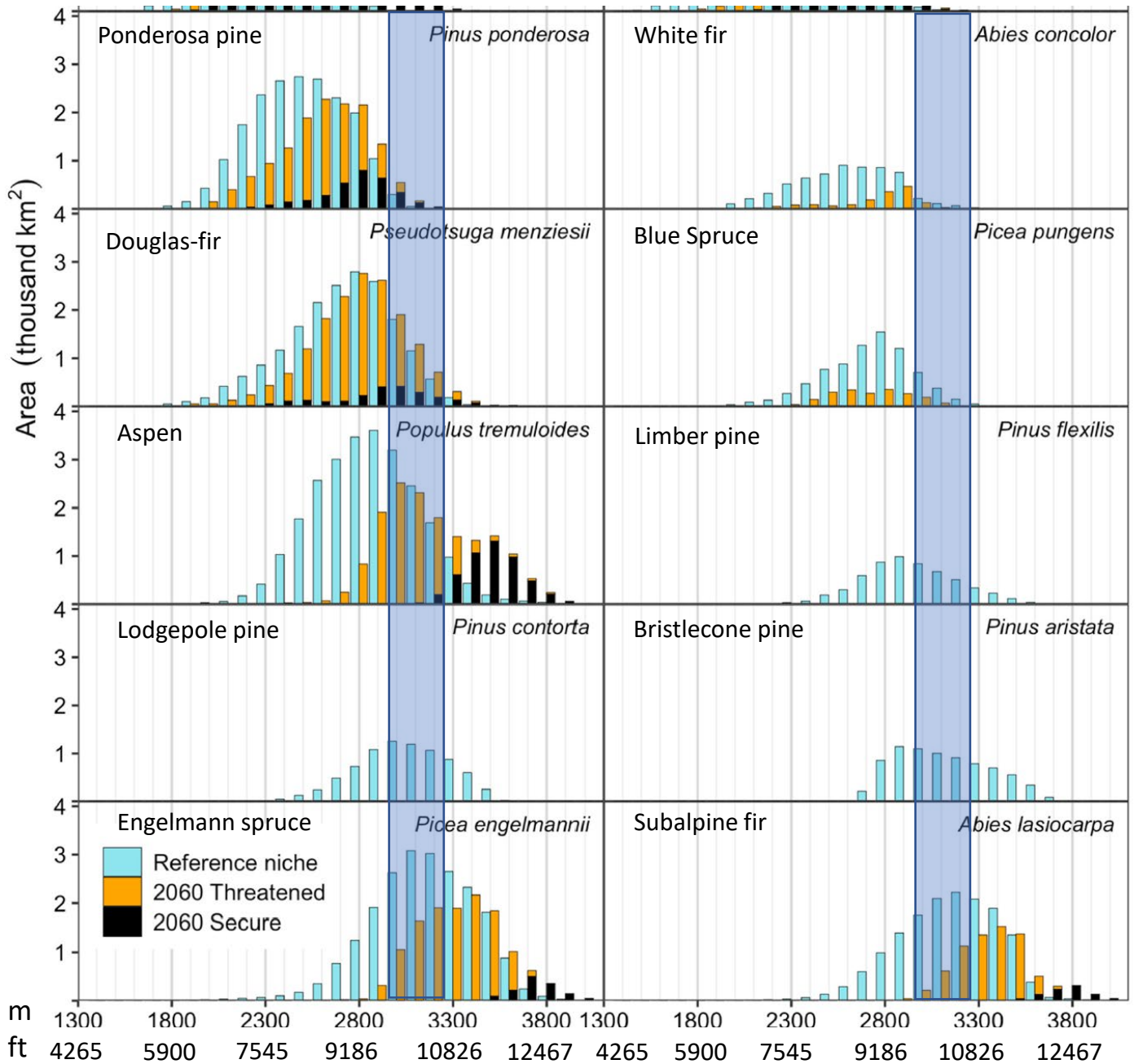
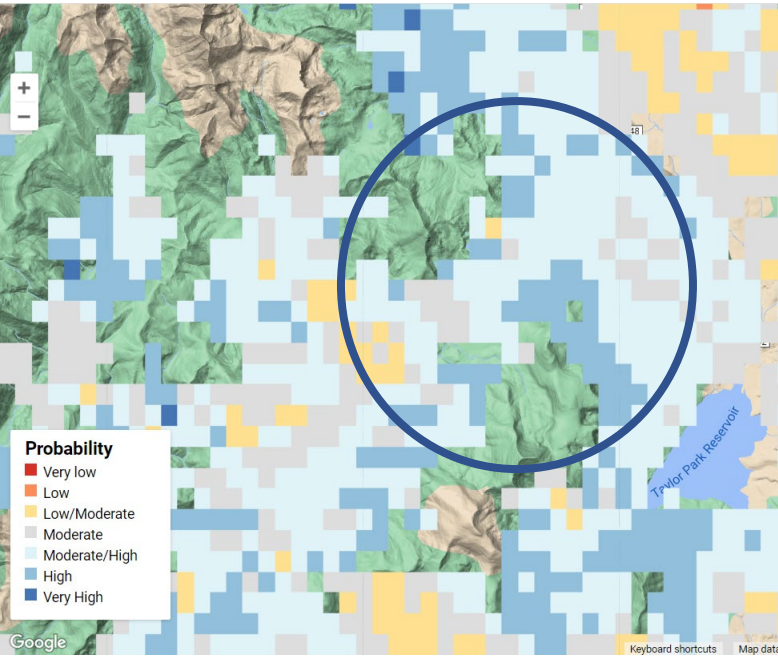


# Climatic Niche Models – 2060



- Blue shaded box represents study site elevation range
- Potential loss of lodgepole pine, limber pine, bristlecone pine, white fir
- Threatened: Aspen, Blue spruce, Engelmann spruce, and subalpine fir
- Secure: Ponderosa pine, Douglas-fir

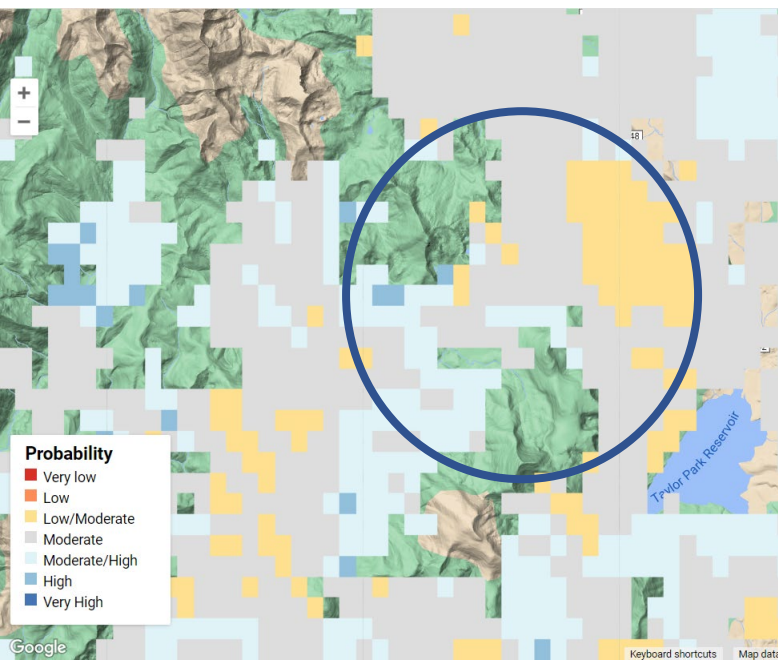
## Lodgepole Pine, Current Climate (2001-2020)



## Regeneration potential after high severity fire

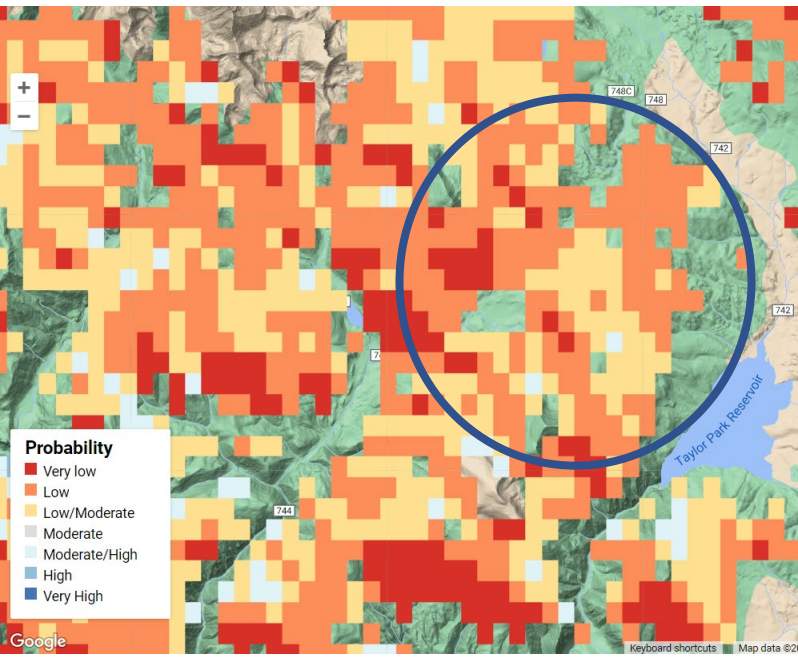
**Moderate to High Potential**

## Lodgepole Pine, RCP 4.5 (2031-2050)



**Low/Moderate to  
Moderate/High Potential**

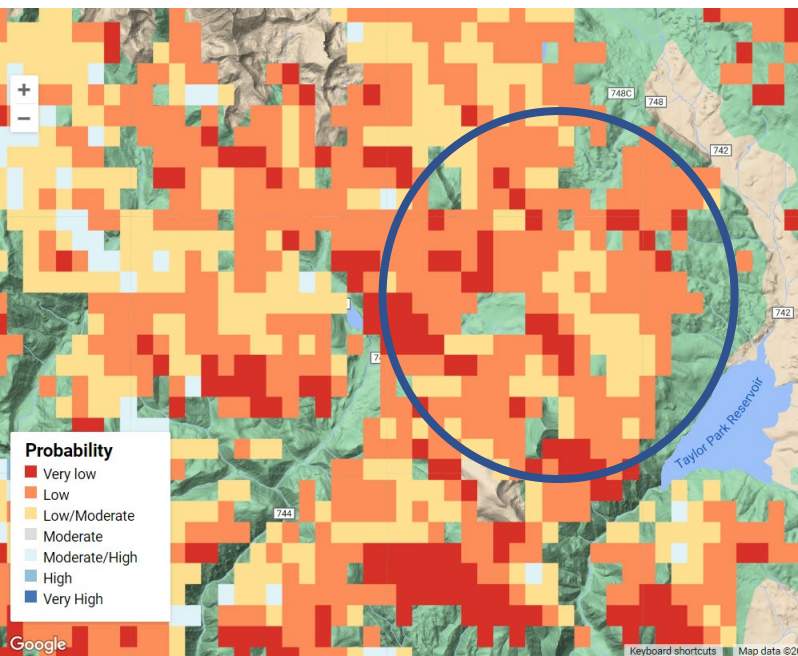
## Engelmann Spruce, Current Climate (2001-2020)



## Regeneration potential after high severity fire

**Very low to Low/Moderate Potential**

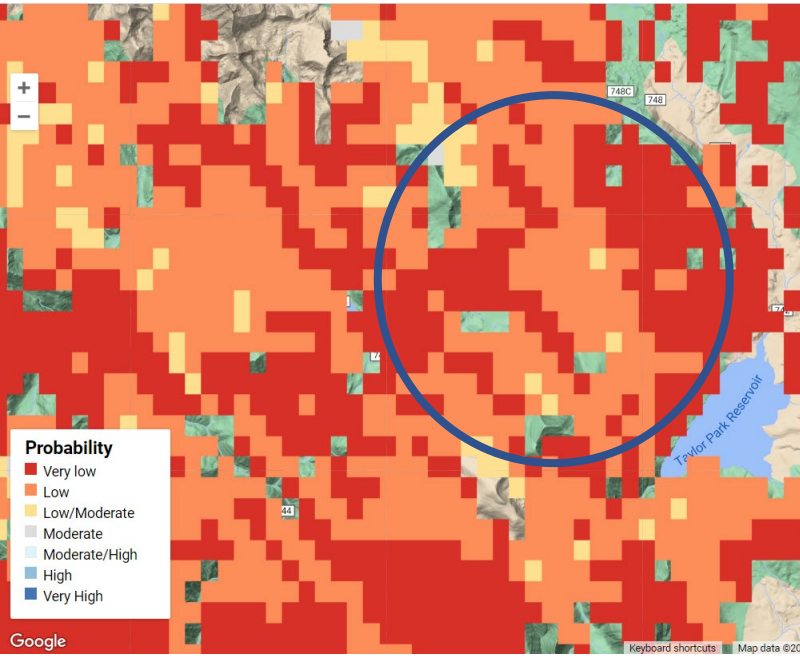
## Engelmann Spruce, RCP 4.5 (2031-2050)



**Very low to Low/Moderate Potential**

# Subalpine fir, Current Climate (2001-2020)

# Regeneration potential after high severity fire



**Very low to Low Potential**

# Subalpine Fir, RCP 4.5 (2031-2050)

**Very low Potential**

