A photograph of a dense forest with tall, thin trees and a large fallen log in the foreground. The forest floor is covered with moss and fallen branches. The background shows a thick canopy of green trees.

Sub-Boreal Spruce Forests Overview of Ecology and Forest Management

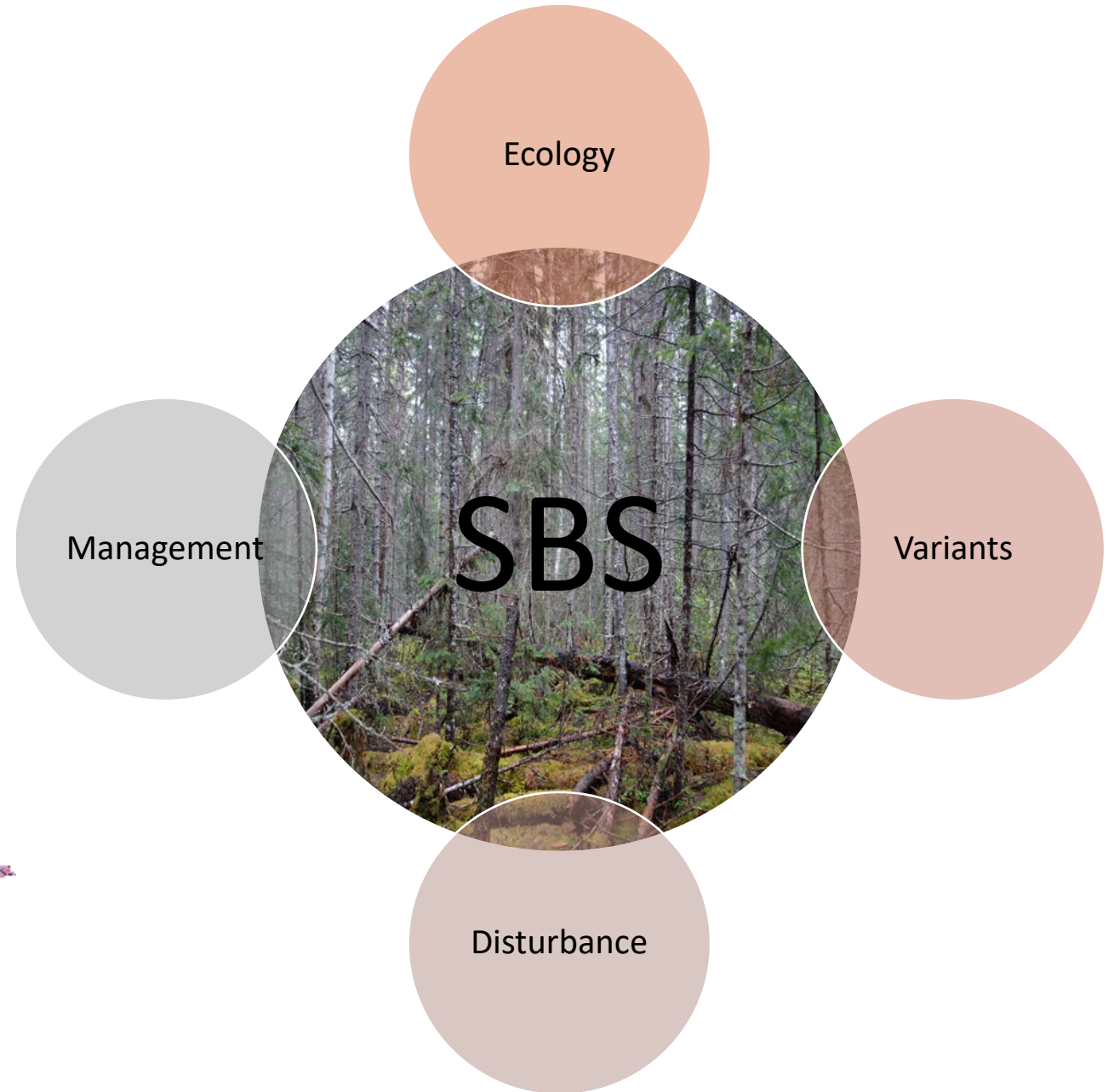
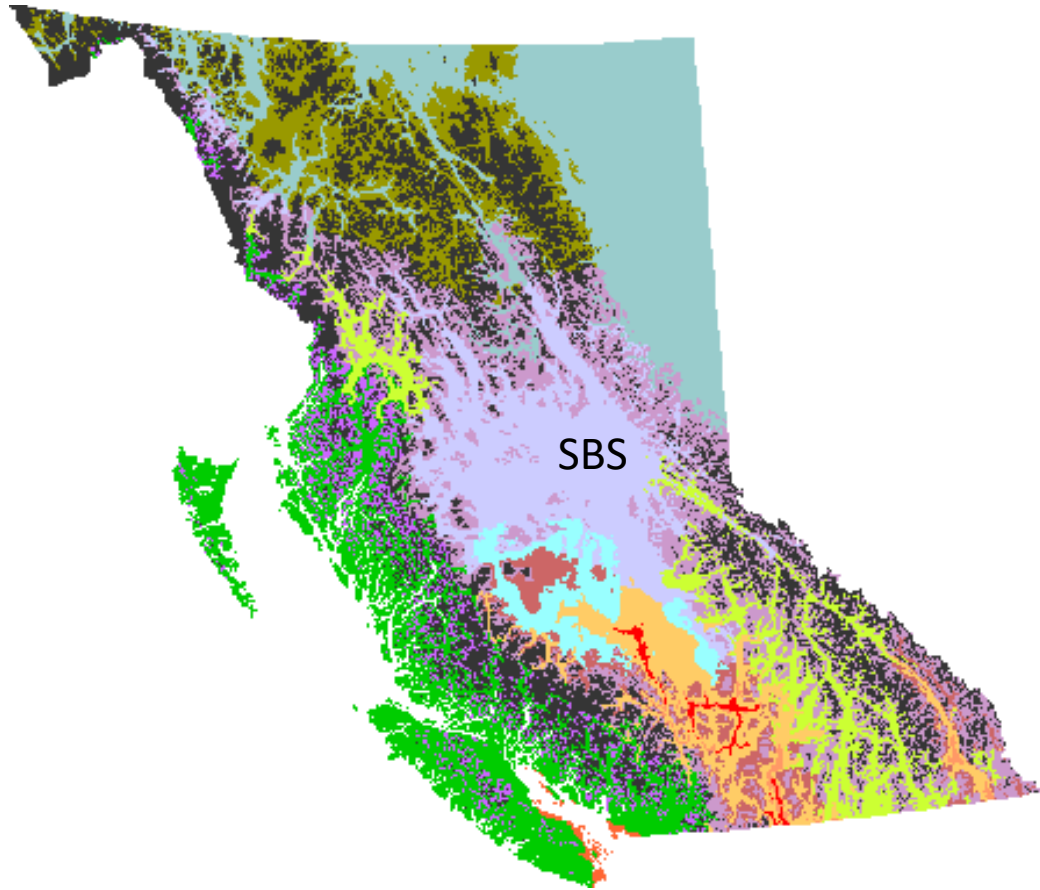
Che Elkin, UNBC

Adaptive Silviculture in SBS

- Objectives
- Current conditions



Sub-Boreal Spruce



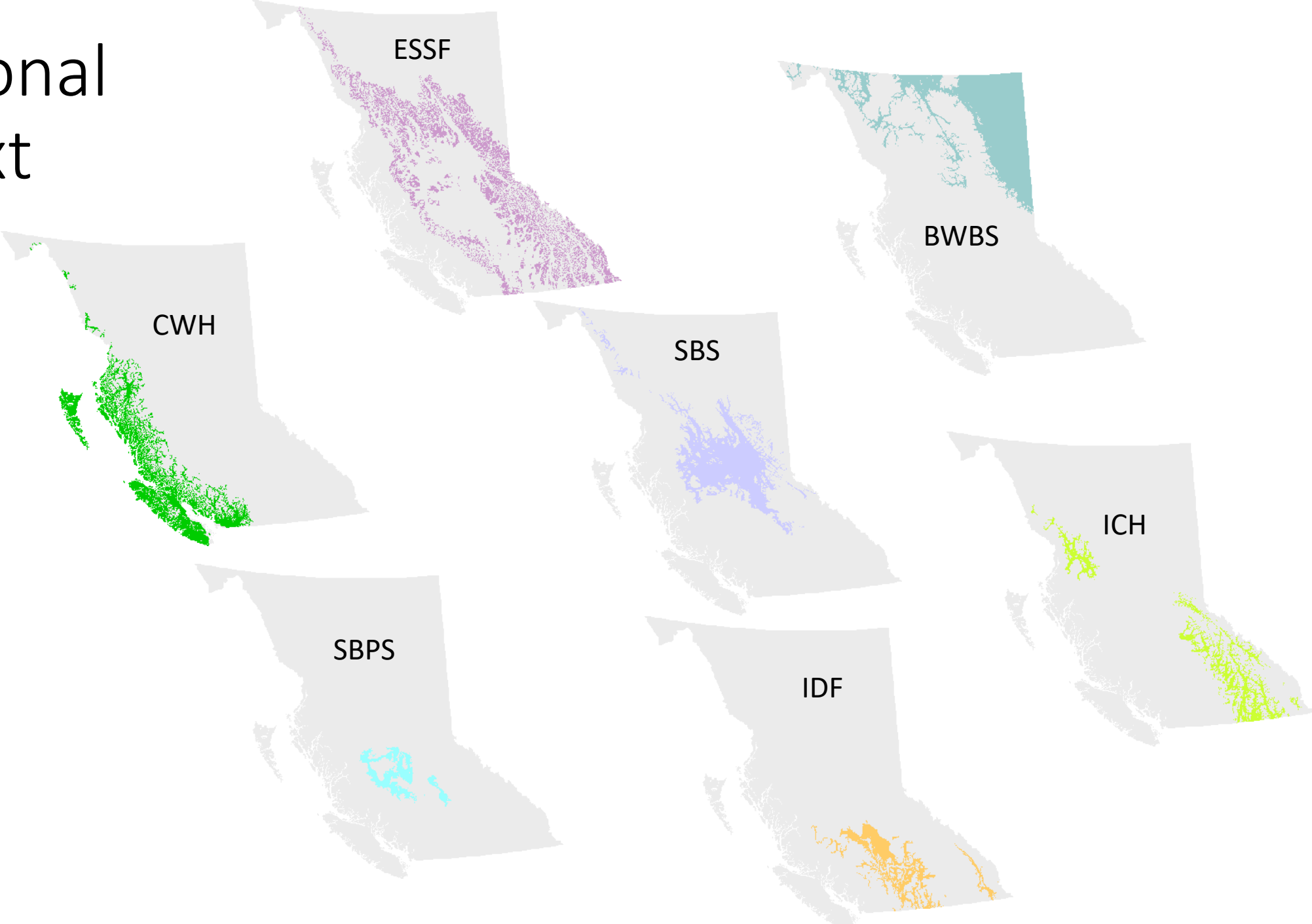


Sub-Boreal Spruce

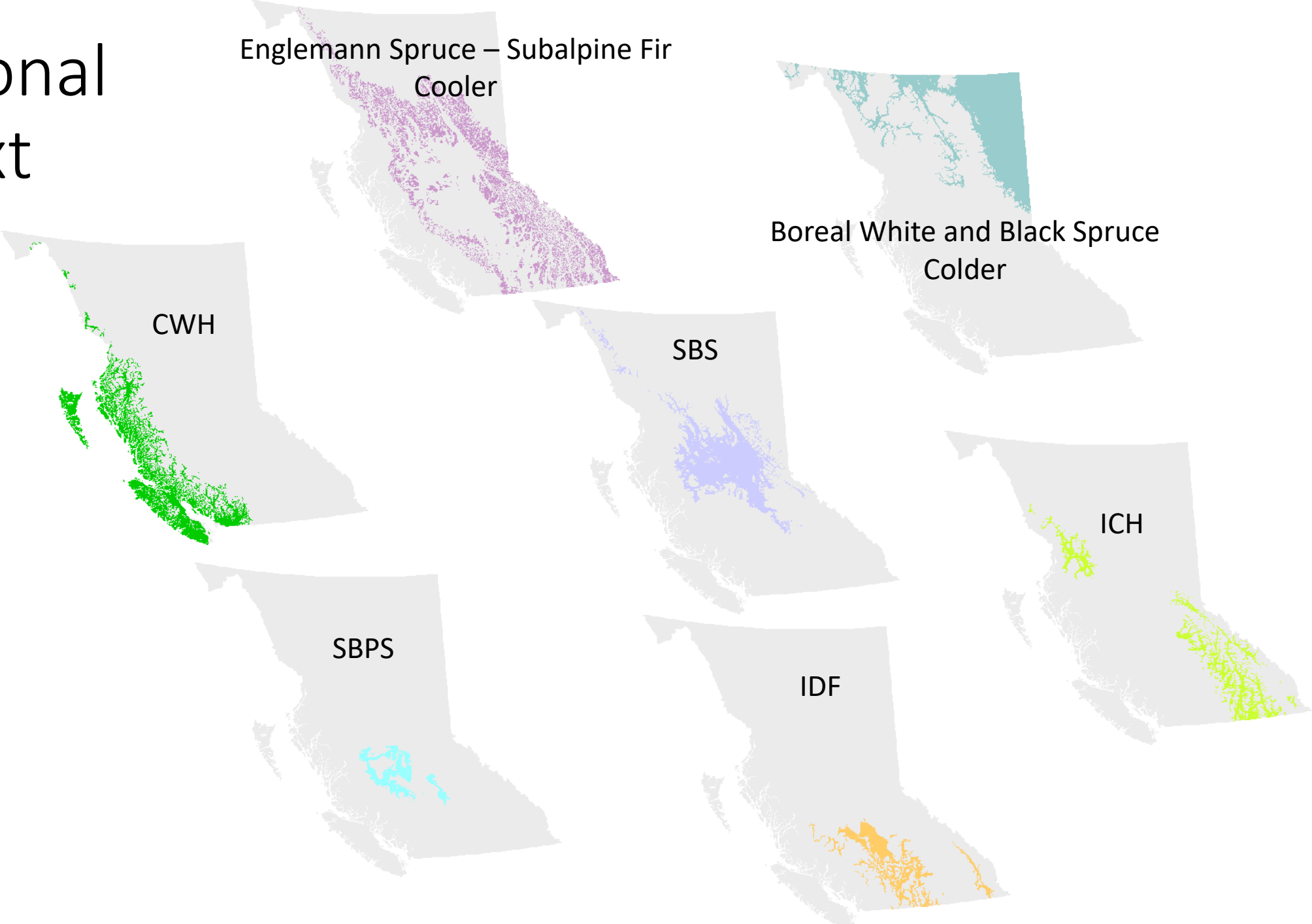
- Largest biogeoclimate zone in northern interior BC
 - 10.3 million ha
- Climate mild continental
 - Precipitation ranges from 500mm in interior to 950mm in the mountainous terrain
- Rolling terrain of the Nechako and Fraser plateaus
- Dominated by upland coniferous forests



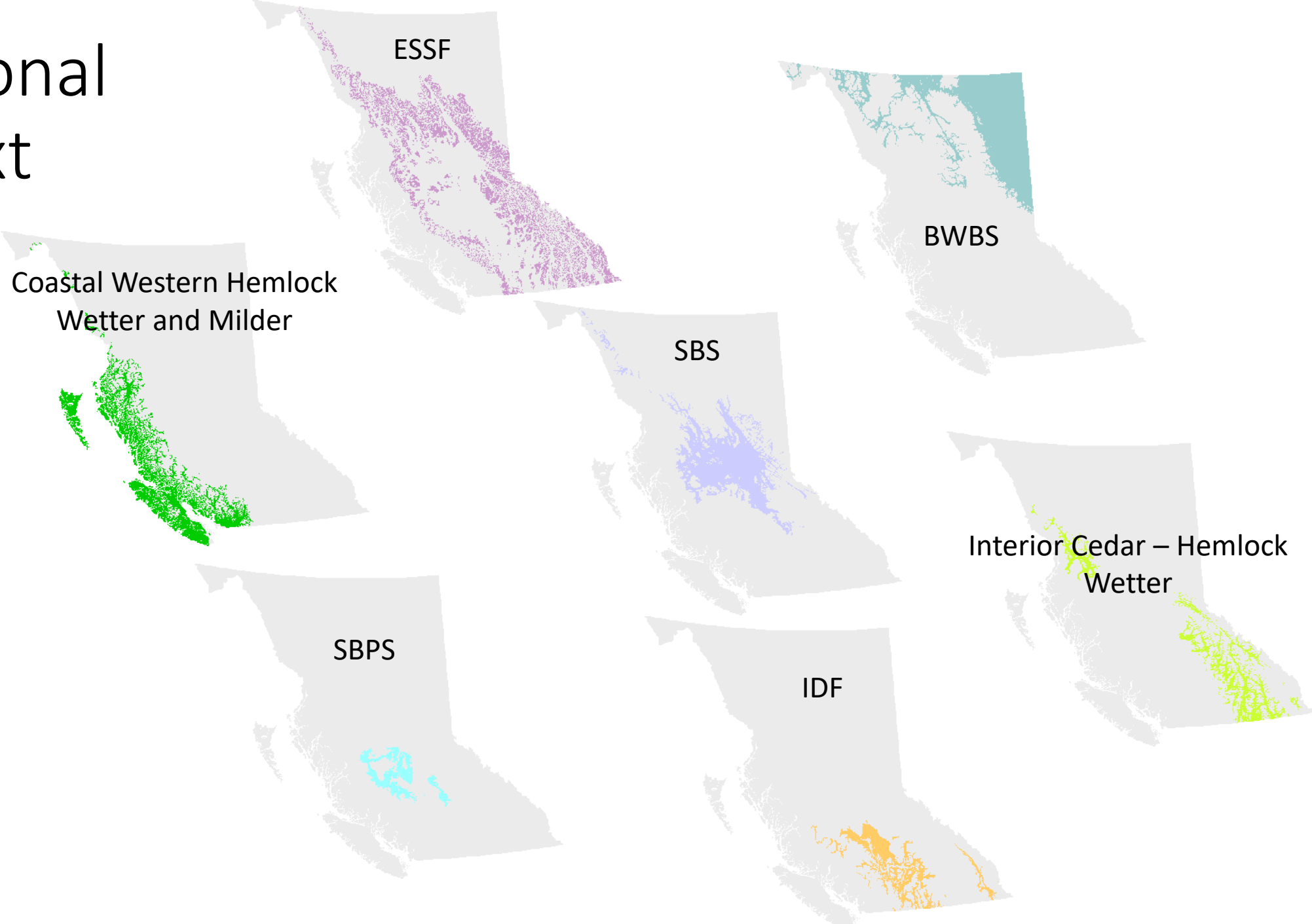
SBS Regional Context



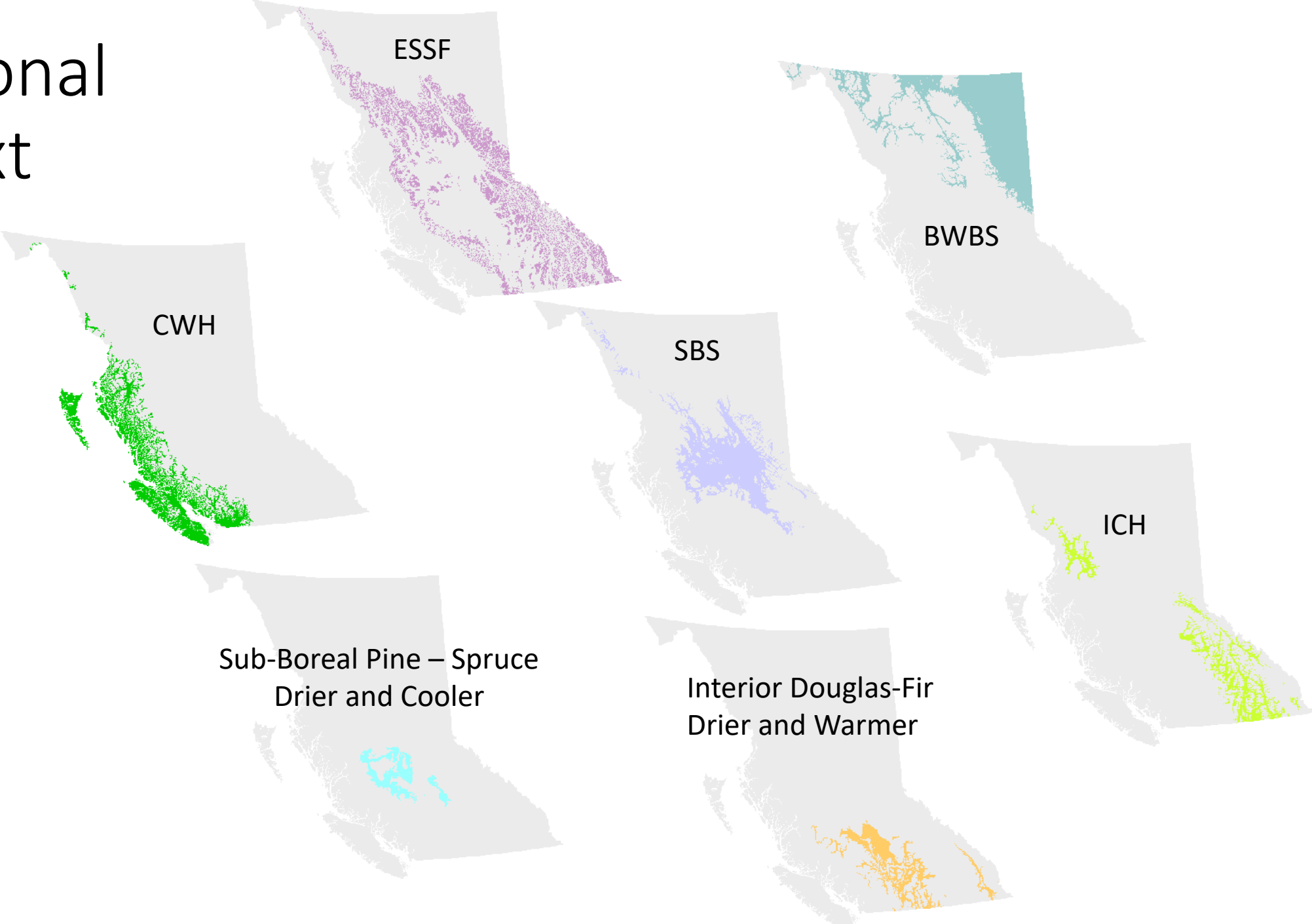
SBS Regional Context



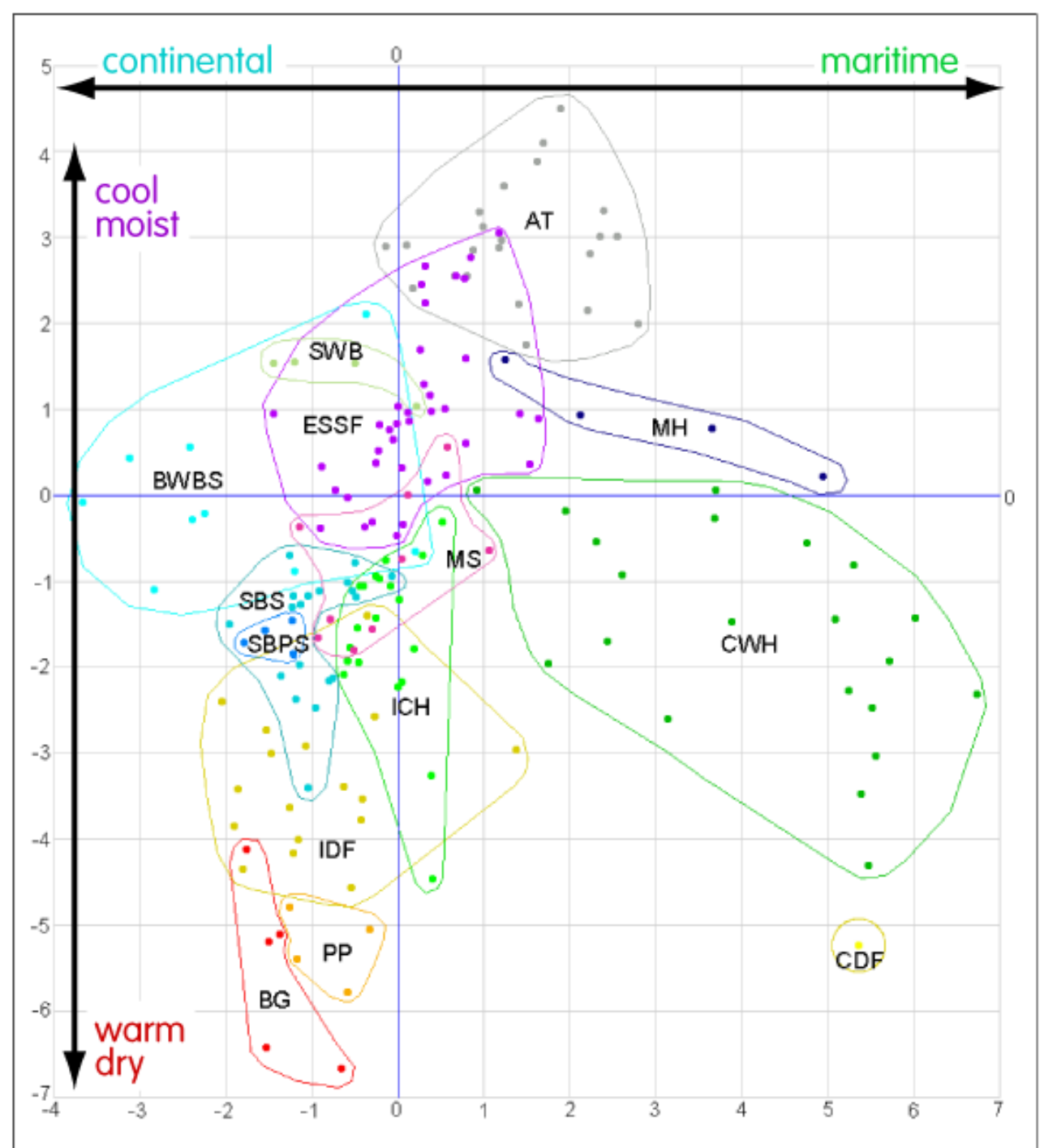
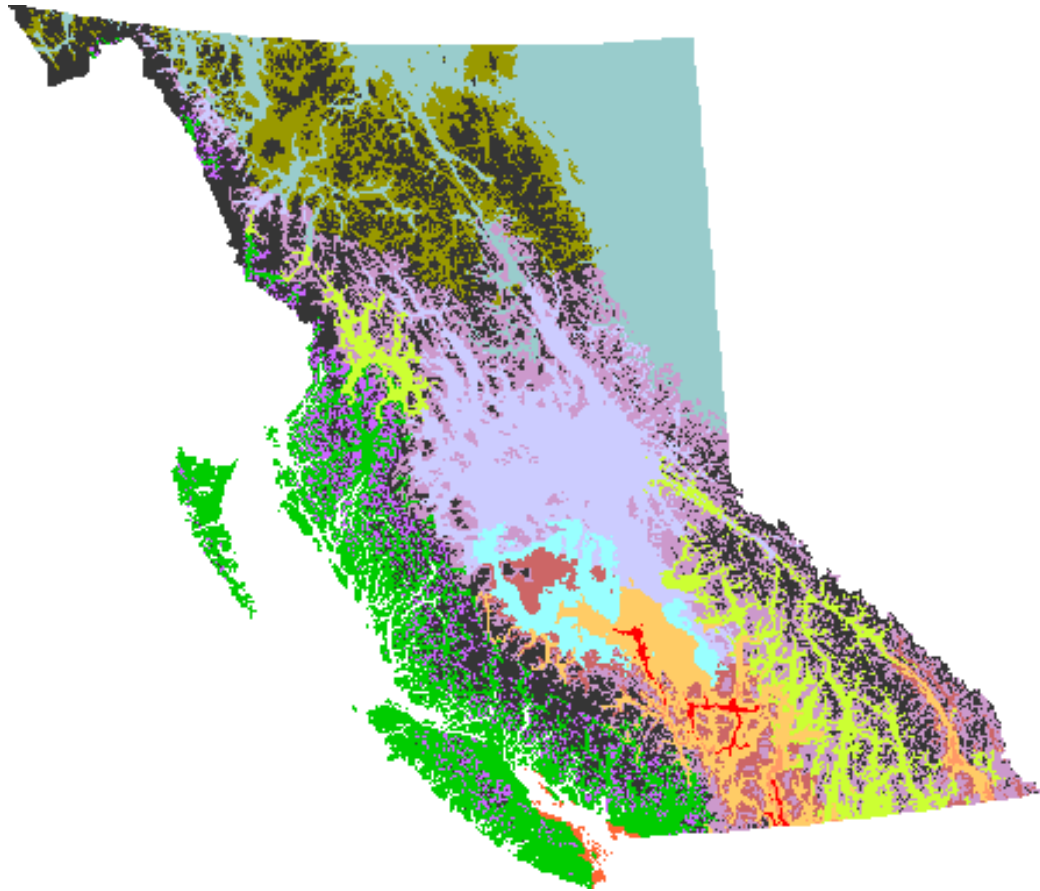
SBS Regional Context



SBS Regional Context

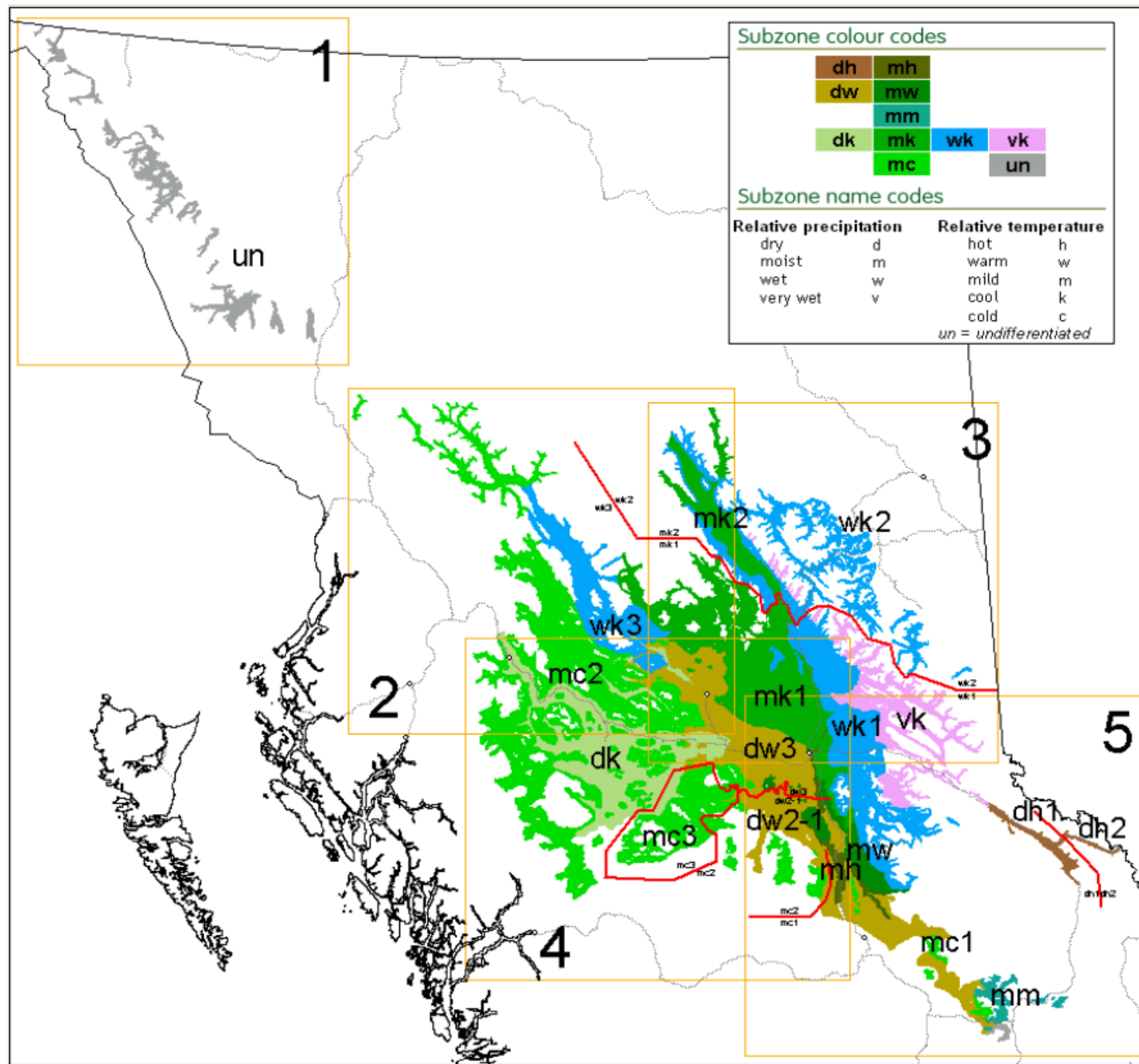


SBS Regional Context



SBS variation

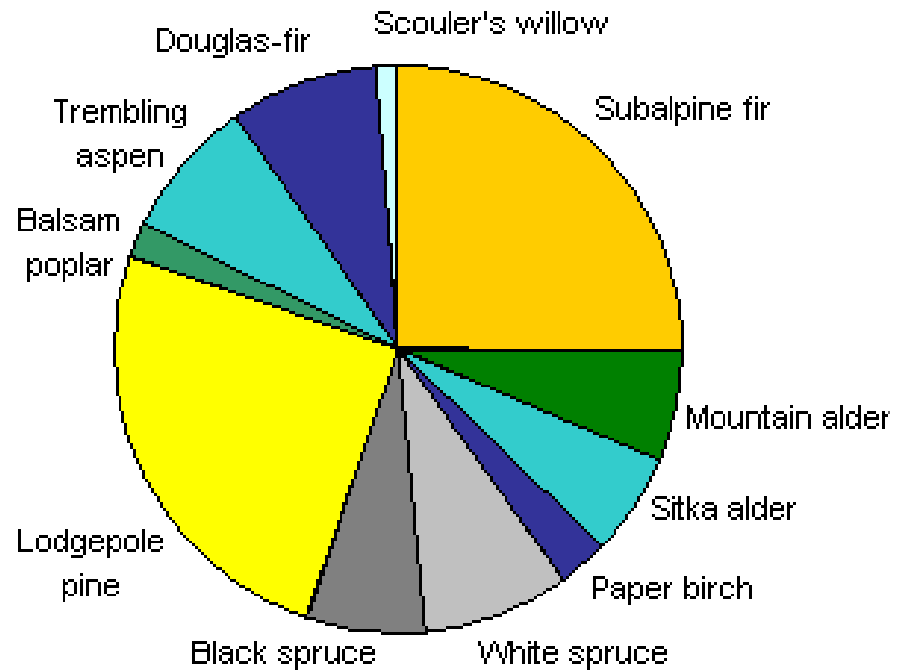
Flavors of SBS



	dry	moist	wet	very wet	
		mc			cold
dk		mk	wk	vk	cool
		mm			mild
dw		mw			warm
dh		mh			hot

Forest Structure

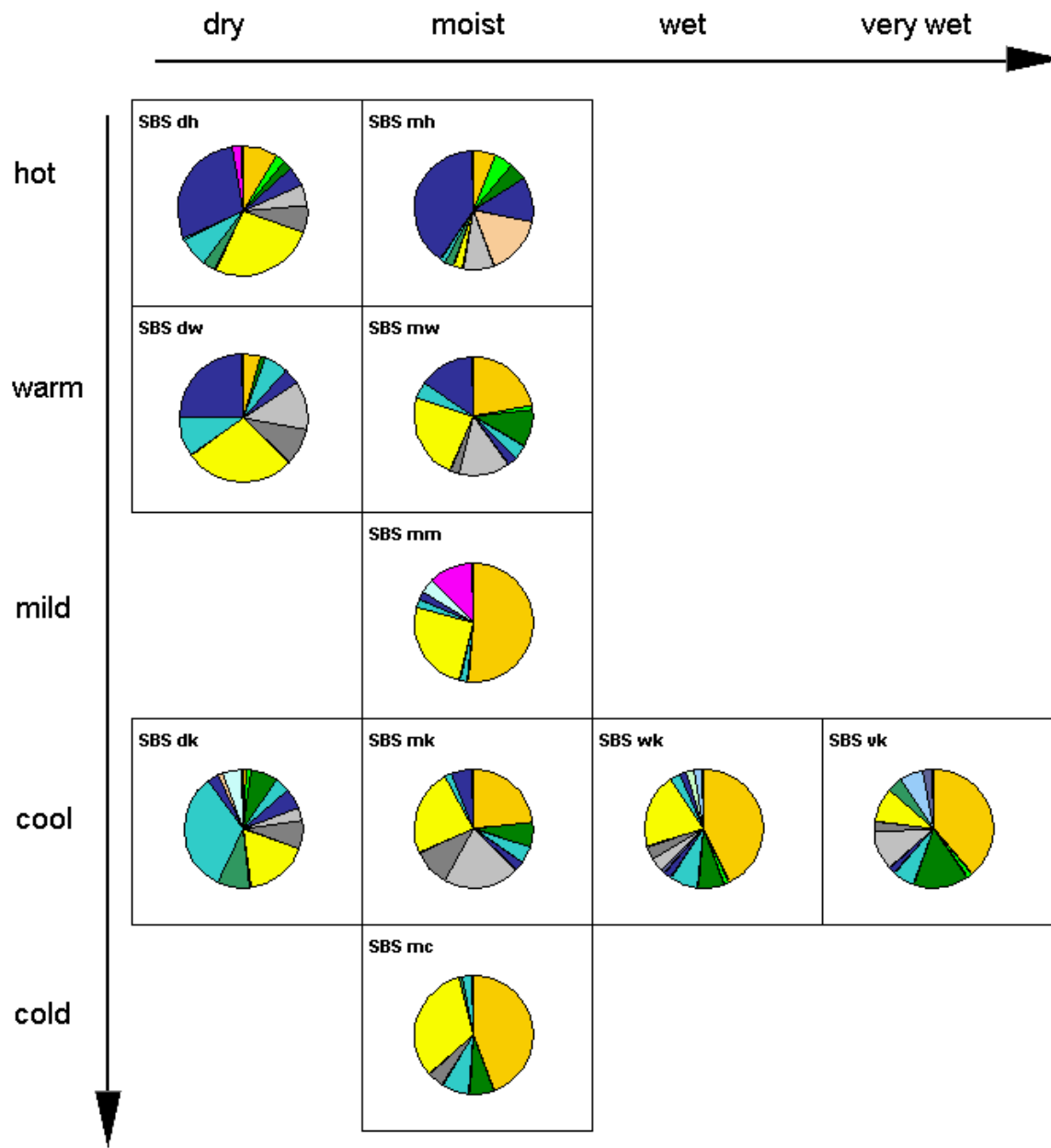
Species composition SBS zone



Douglas-fir

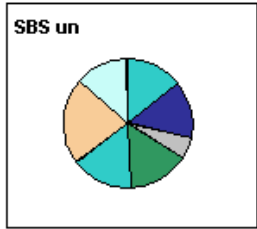
Lodgepole pine

Aspen



Spruce

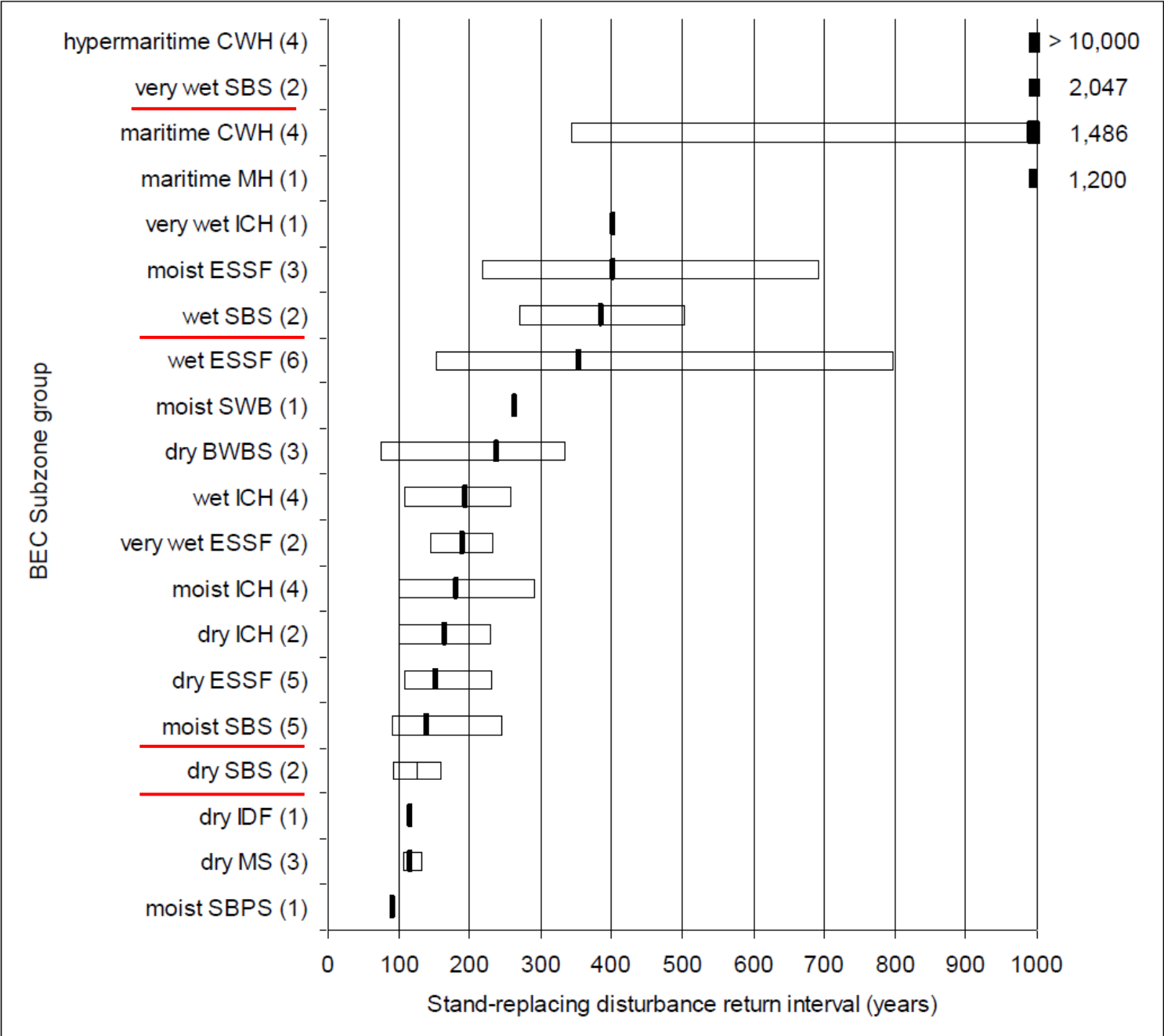
Subalpine fir



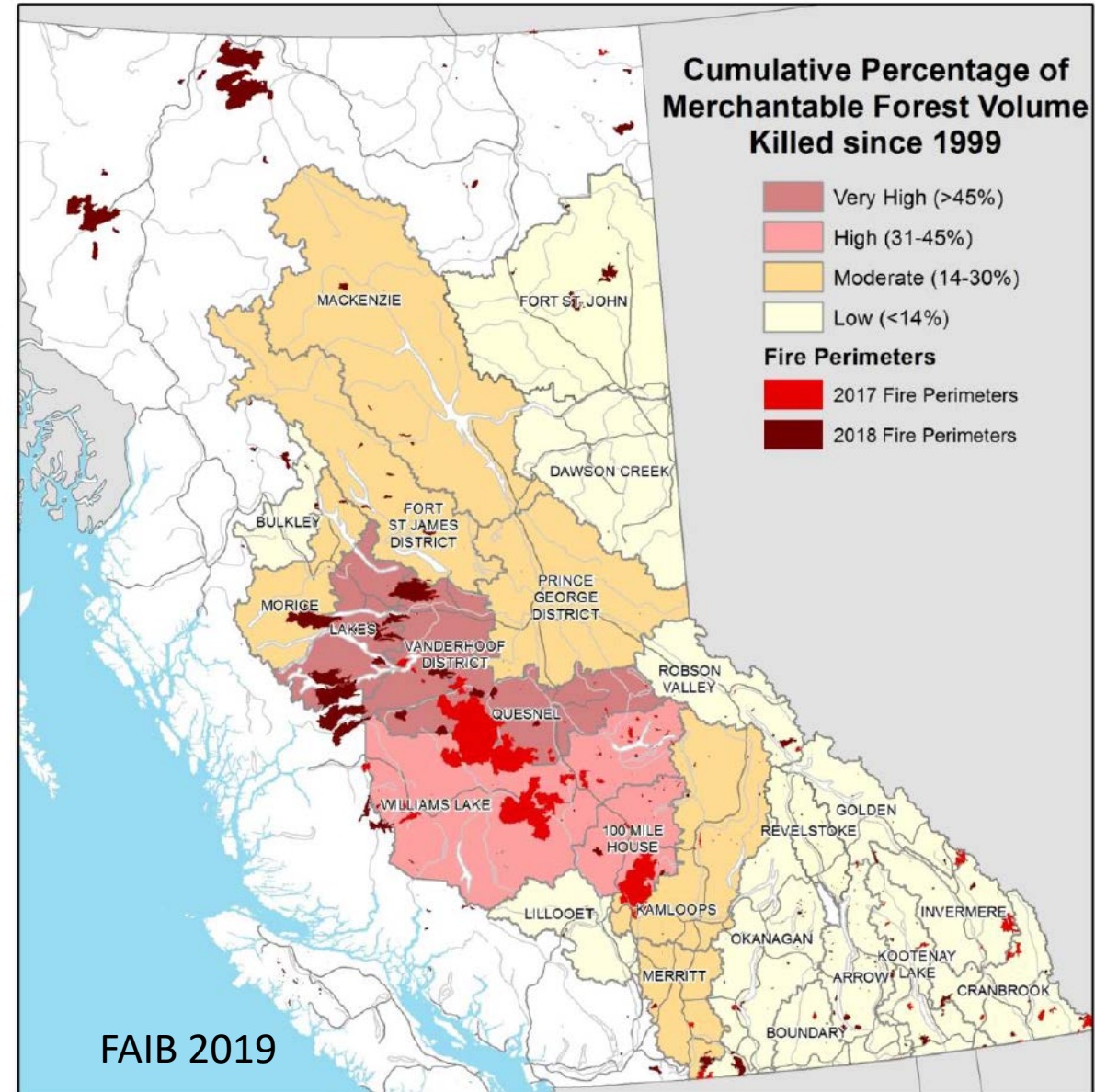
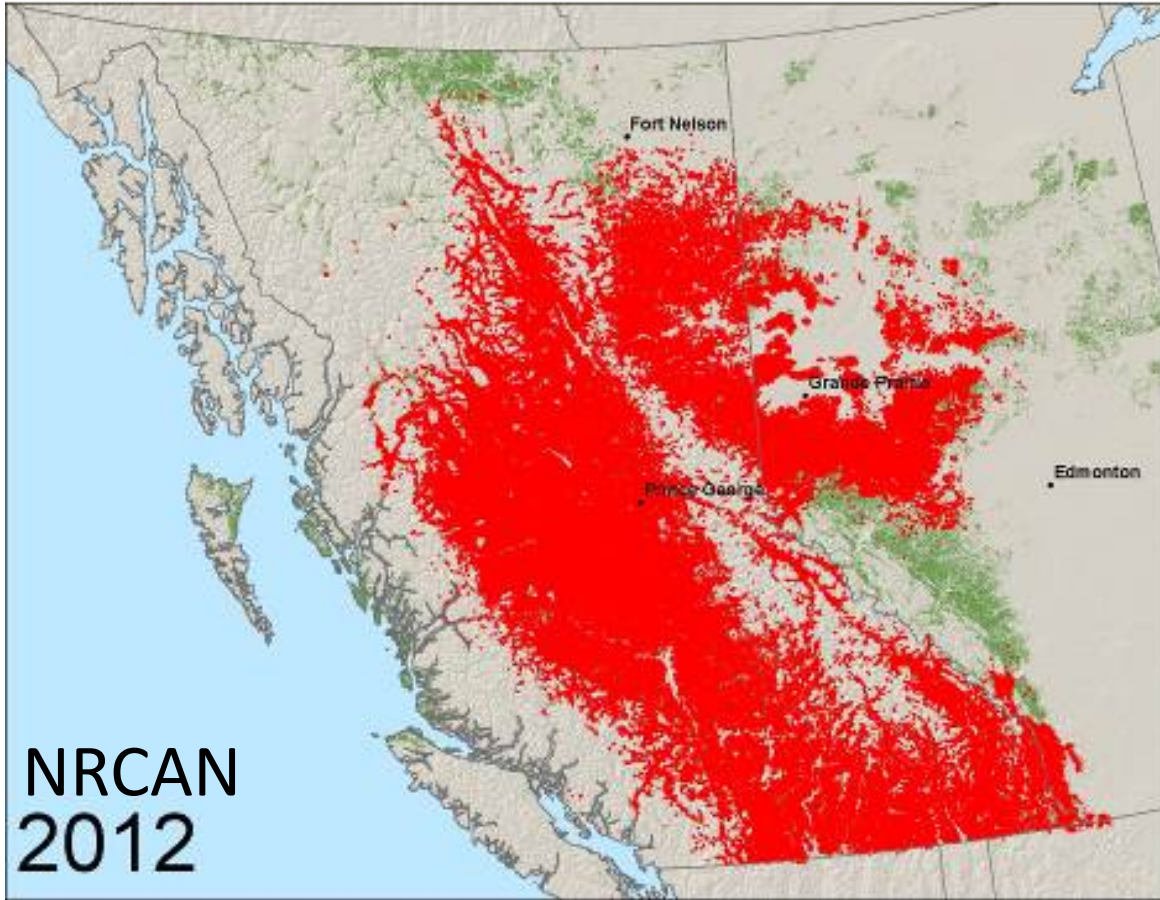
Disturbances and Forest State



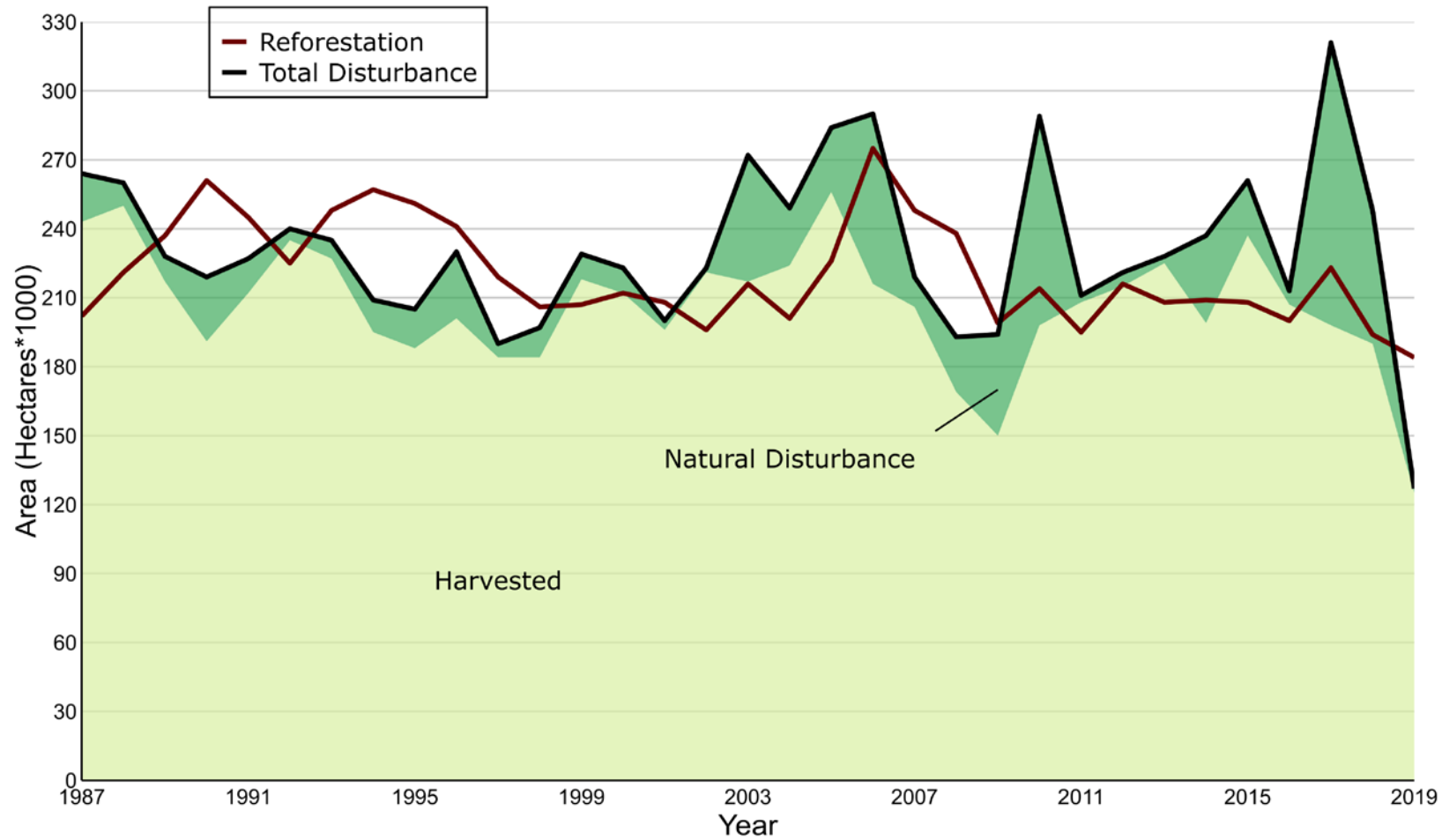
Disturbances and forest state



MPB and Fire



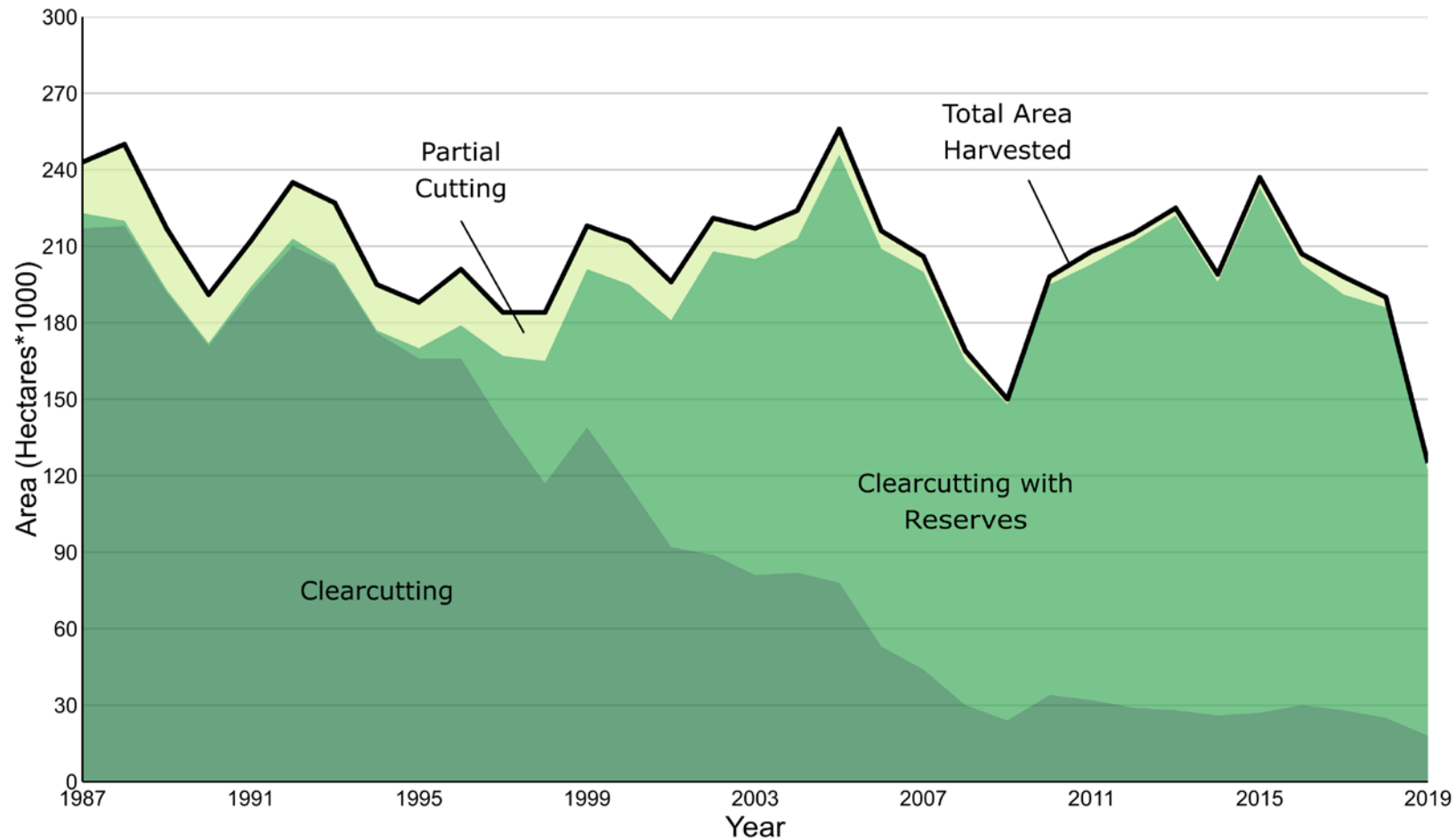
Disturbance and Reforestation



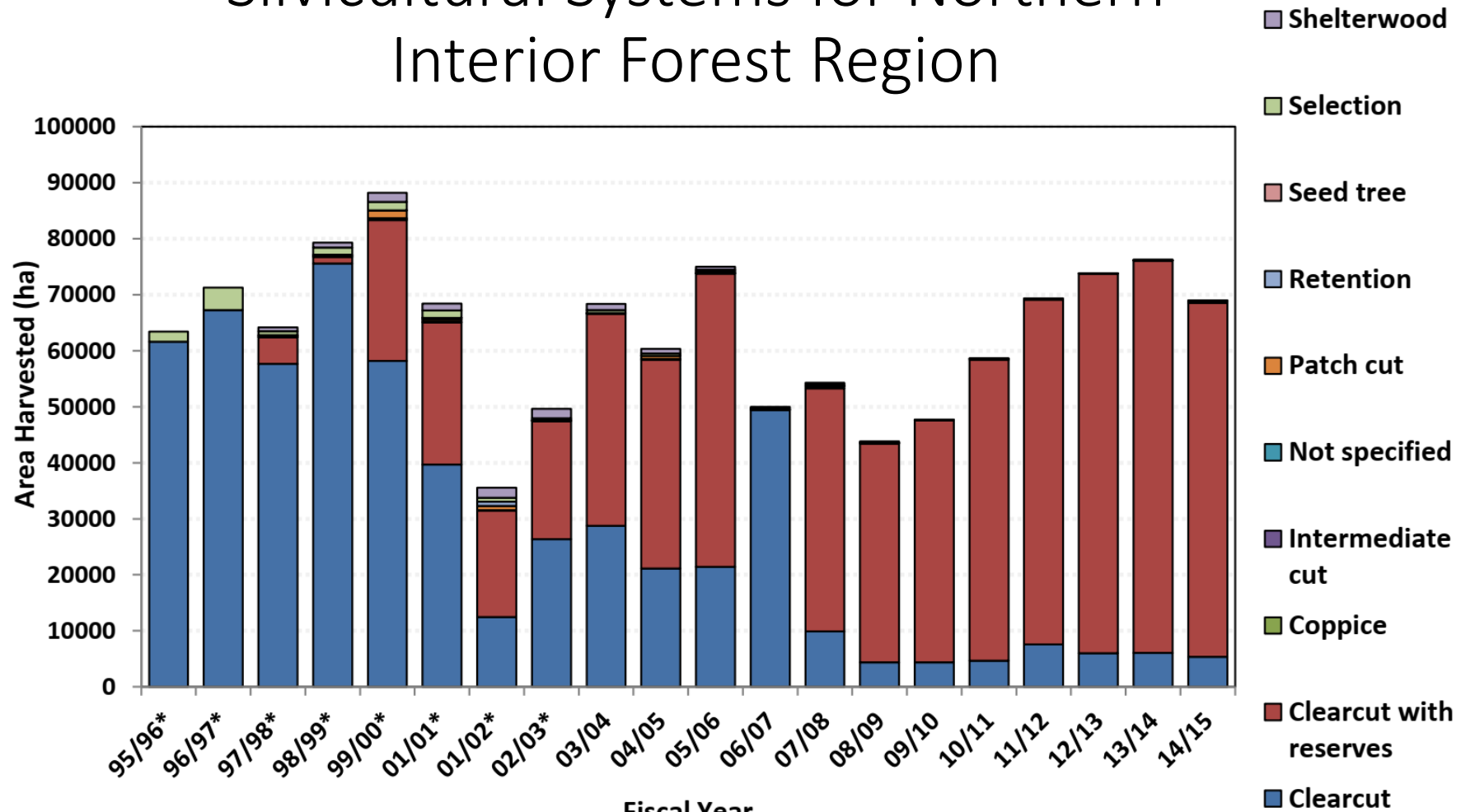
Management



Silviculture systems (BC)

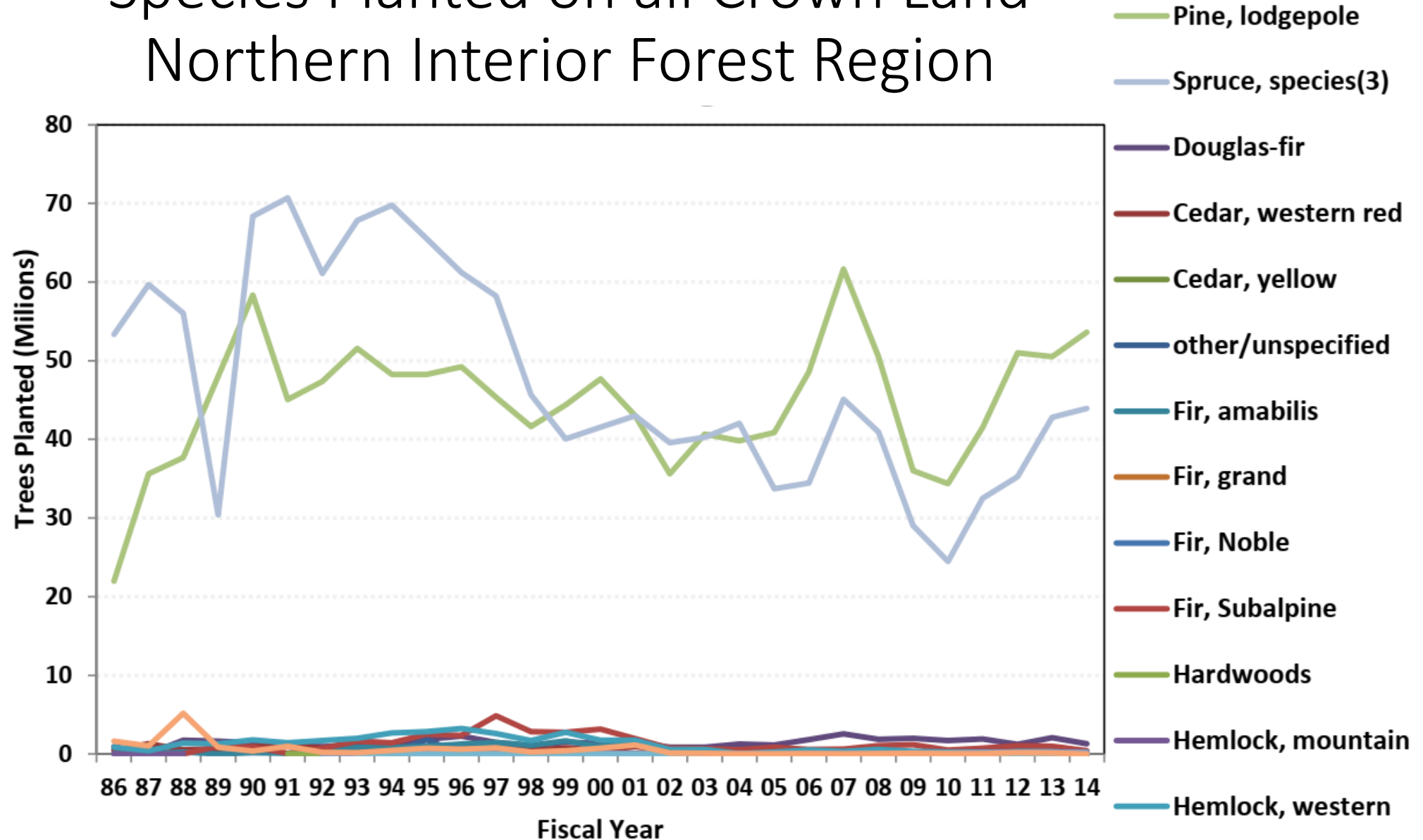


Silvicultural Systems for Northern Interior Forest Region



* Old region codes: Prince George, Prince Rupert = Northern Interior

Species Planted on all Crown Land Northern Interior Forest Region



Management and forest conditions

Primary Forest



Diameter Limit Cutting
~1960s, 1970s

Replanted forests



Recent

Retention



Shelterwood



A photograph of a forest with tall, thin trees and a large fallen log in the foreground. The text is overlaid on a semi-transparent white box in the center of the image.

Sub-Boreal Spruce
Future?
Adaptive Silviculture?