

CLIMATE CHANGE & SOUTHERN NEW ENGLAND'S FORESTS

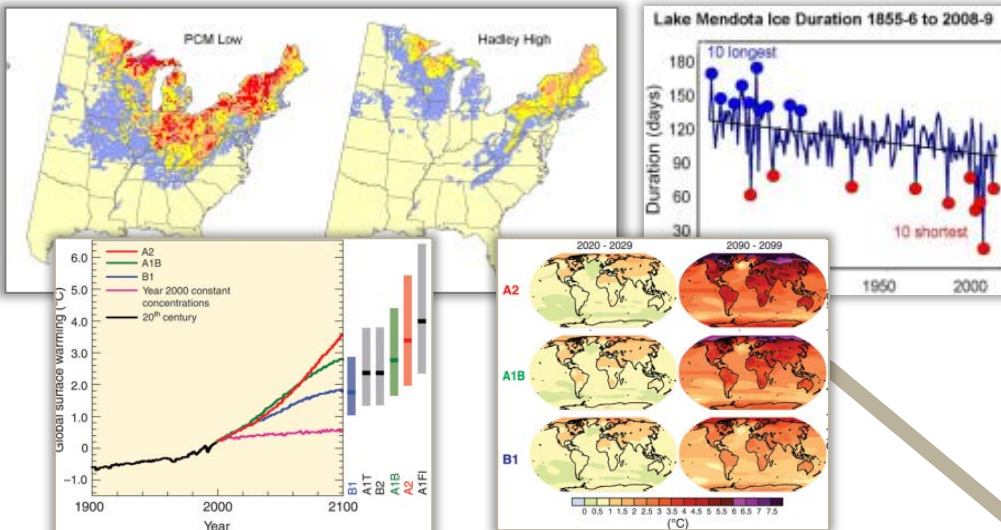
September 23, 2014



www.forestadaptation.org

How do we get **from here...**

...to here?



RUSH LAKE
TRAIL
←

Northern Institute of Applied Climate Science

- Provides practical information, resources, and technical assistance related to forests and climate change
- Supports the integration of climate change information into natural resource management



www.nrs.fs.fed.us/niacs/

Regional multi-institutional partnership among:



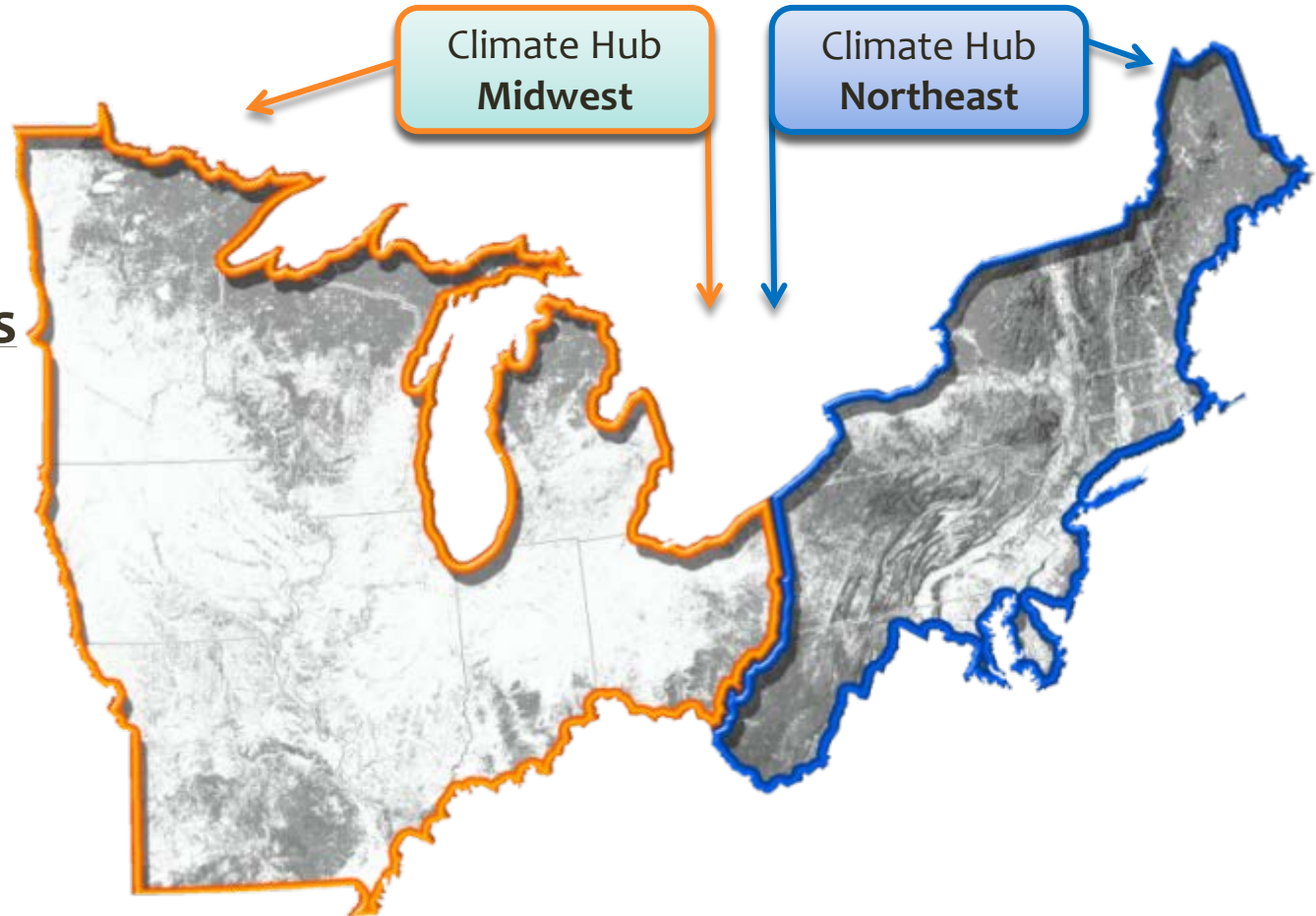
Michigan Tech
ncasi



New ! USDA Climate Hubs

NIACS

Coordinates the
Northern Forests
Sub Hub as part
of the USDA
Regional Climate
Hubs in the
Midwest and
Northeast

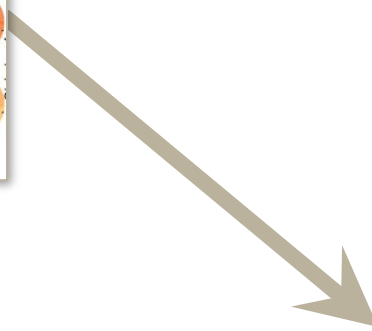
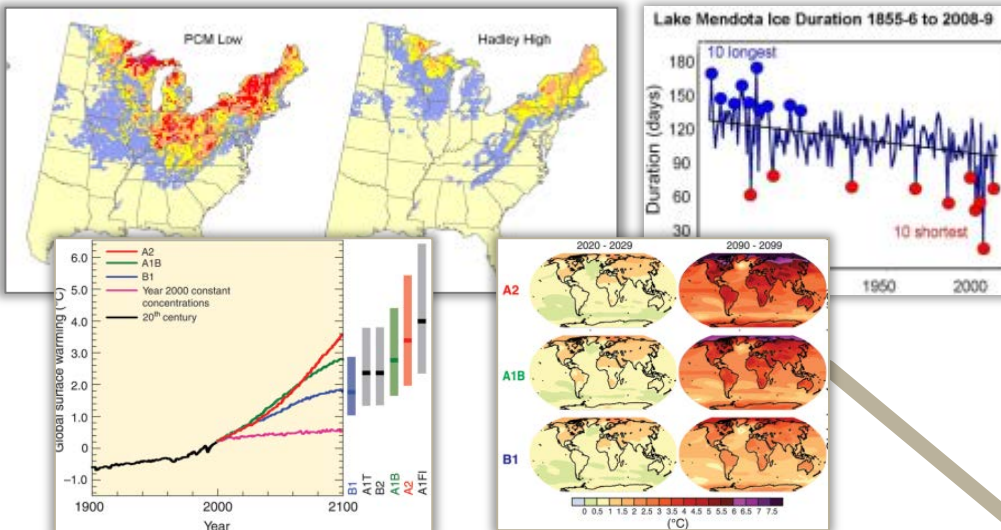


Resources for Additional Information

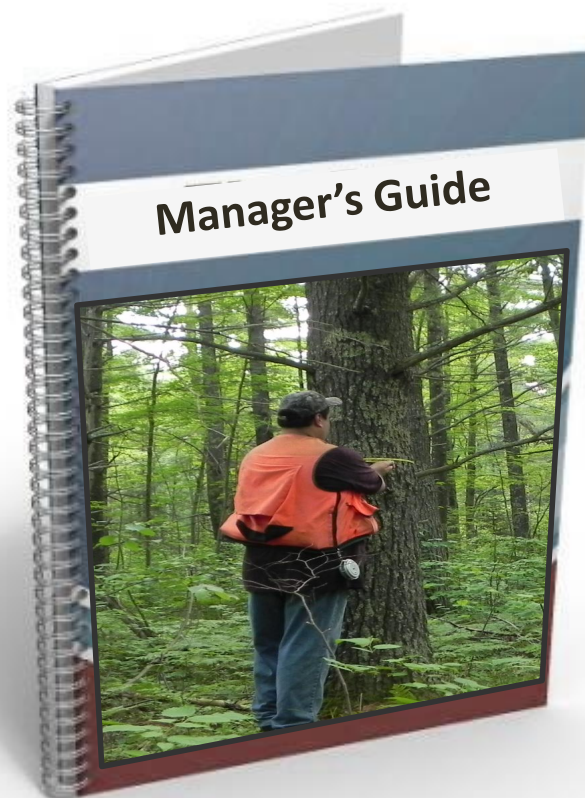
- Climate Change Resource Center
- **New England Climate Change Response Framework**
- Impacts of Climate Change on Forests of the Northeastern US
- **Northeast Climate Science Center**
- **North Atlantic Landscape Conservation Cooperative**
- Terrestrial and Wetland Habitat Vulnerability Assessment for the Northeast
- National Climate Assessment

How do we get **from here...**

...to here?



Responding to Climate Change



Responding to Climate Change

There is not a single “answer”

~~Manager's Guide~~

~~Decision Tree~~

~~E-Z Whiz-bang Tool~~

Critical to start with:

The place

**Management goals
& objectives**

Climate Change Response Framework

Structured, process oriented, works on multiple scales

Components:



Partnerships

Vulnerability Assessment

Forest Adaptation Resources

Adaptation Demonstrations

Progress:

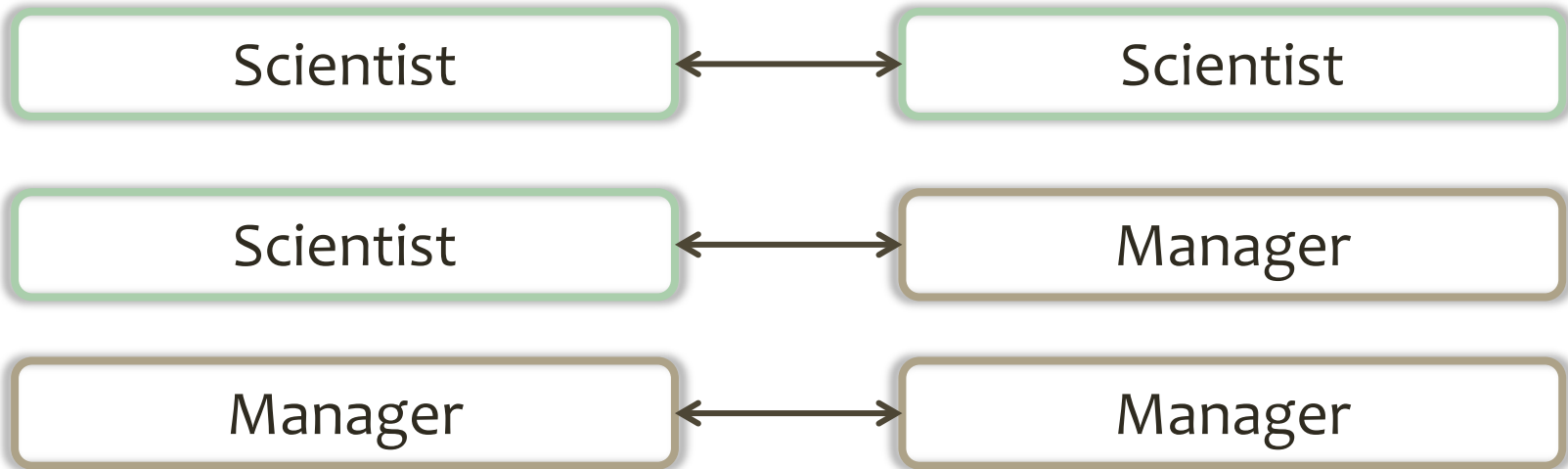
75+ partner organizations
(and counting)

3 published assessments,
3 more in press/revision

Published in 2012, updated
and online versions in prep

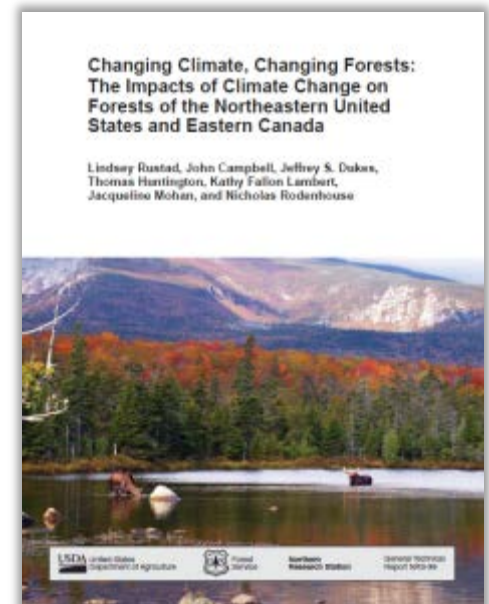
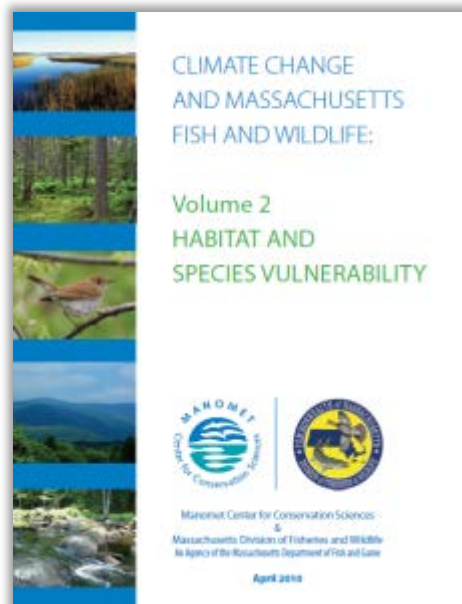
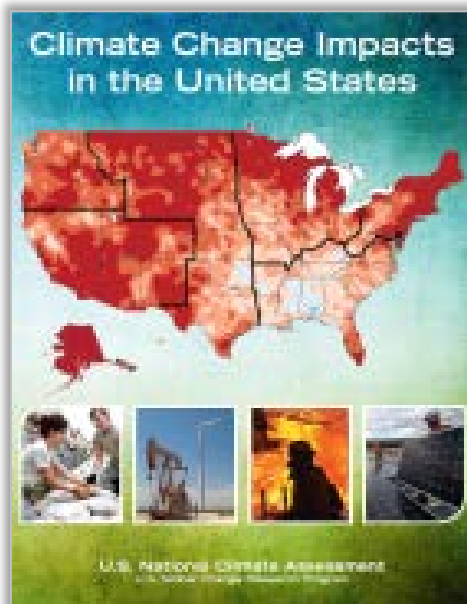
50+ demonstrations
underway

Partnerships



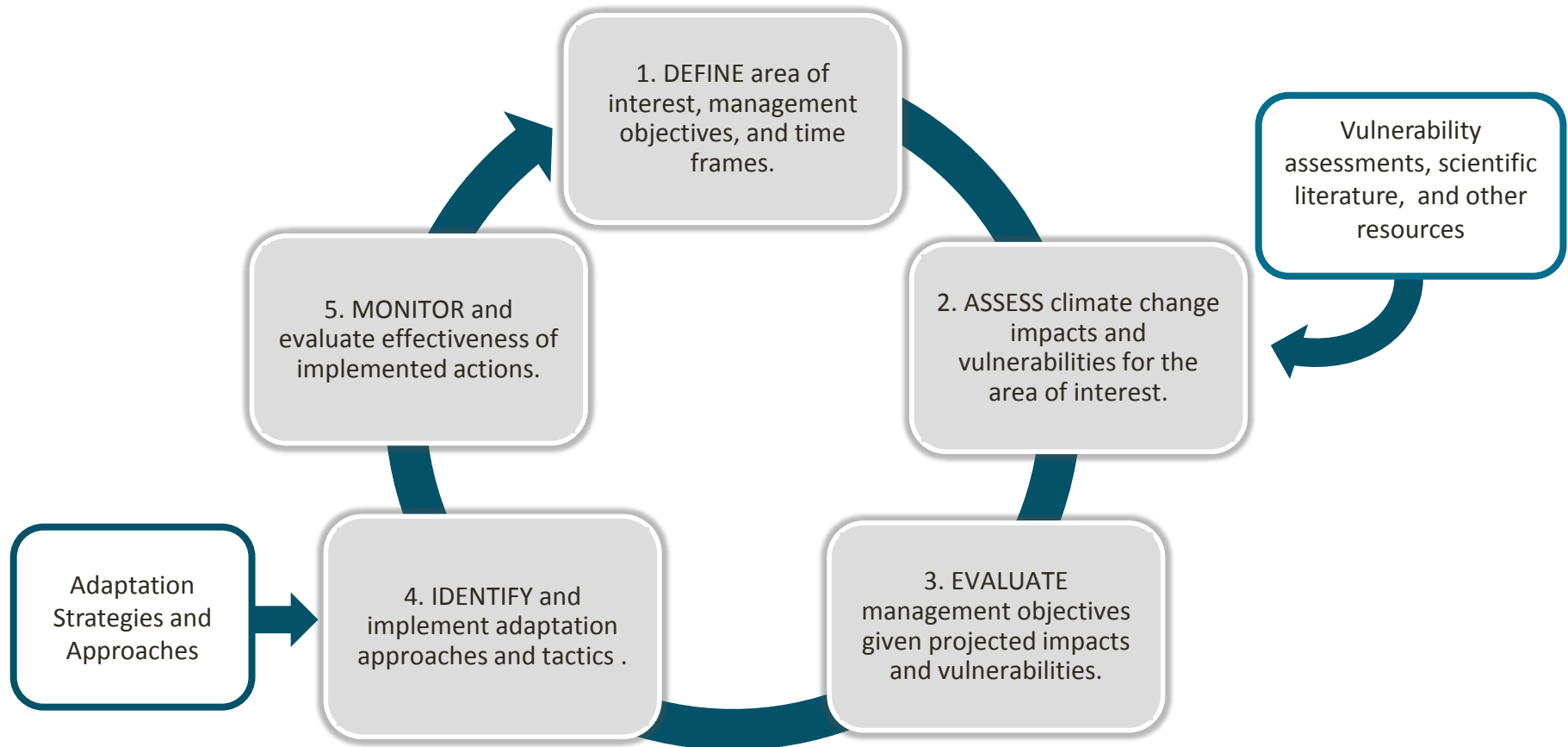
Vulnerability Assessments

- High-quality information about future change in climate and potential effects on forest ecosystems
- In New England, synthesizing current state and regional assessments to highlight greatest risks



Forest Adaptation Resources

- Provides structured process to integrate climate change considerations into management planning and activities

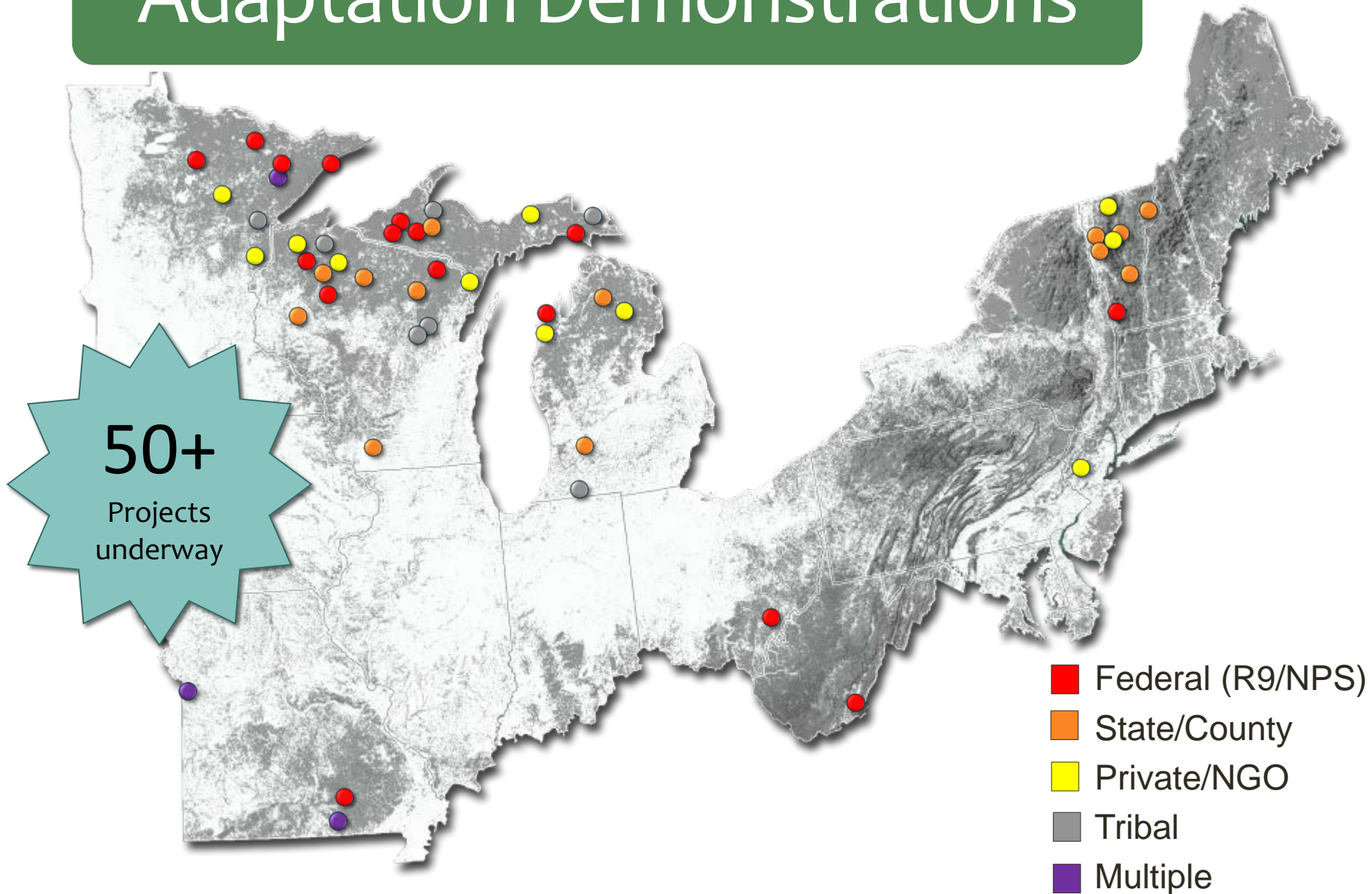


Adaptation Demonstrations

- Provide **real-world examples** of forest management activities that:
 - Enhance the ability of forests to cope with changing conditions
 - Achieve land owner management goals
- Foster **cross-ownership** dialogue and learning



Adaptation Demonstrations



Today...

- 9:20 **Southern New England's Changing Climate**
Ray Bradley, University of Massachusetts-Amherst
- 10:00 Break
- 10:20 **Climate Change Effects on Forest Ecosystems**
Maria Janowiak, Northern Institute of Applied Climate Science
- 11:20 **Climate Change Effects on Wildlife**
David King, US Forest Service Northern Research Station
- 12:00 Lunch
- 1:00 **Adapting Forests to Climate Change: Approaches for Action**
Patricia Butler, Northern Institute of Applied Climate Science
- 1:25 **Real-world Examples of Forest Adaptation**
Tony D'Amato, University of Minnesota/Harvard Forest
- 2:00 Break
- 2:15 **Activity: Integrating Climate Change into Your Work**
- 4:00 **Adjourn**